

Silence redefined

info@xs-alu.com
+36 20 409 9893
Lackner Kristóf utca 27.
9400 Sopron, Hungary
www.xs-alu.com

Warehouse:
Régi Veszprémi út 14-16.
9028 Győr, Hungary

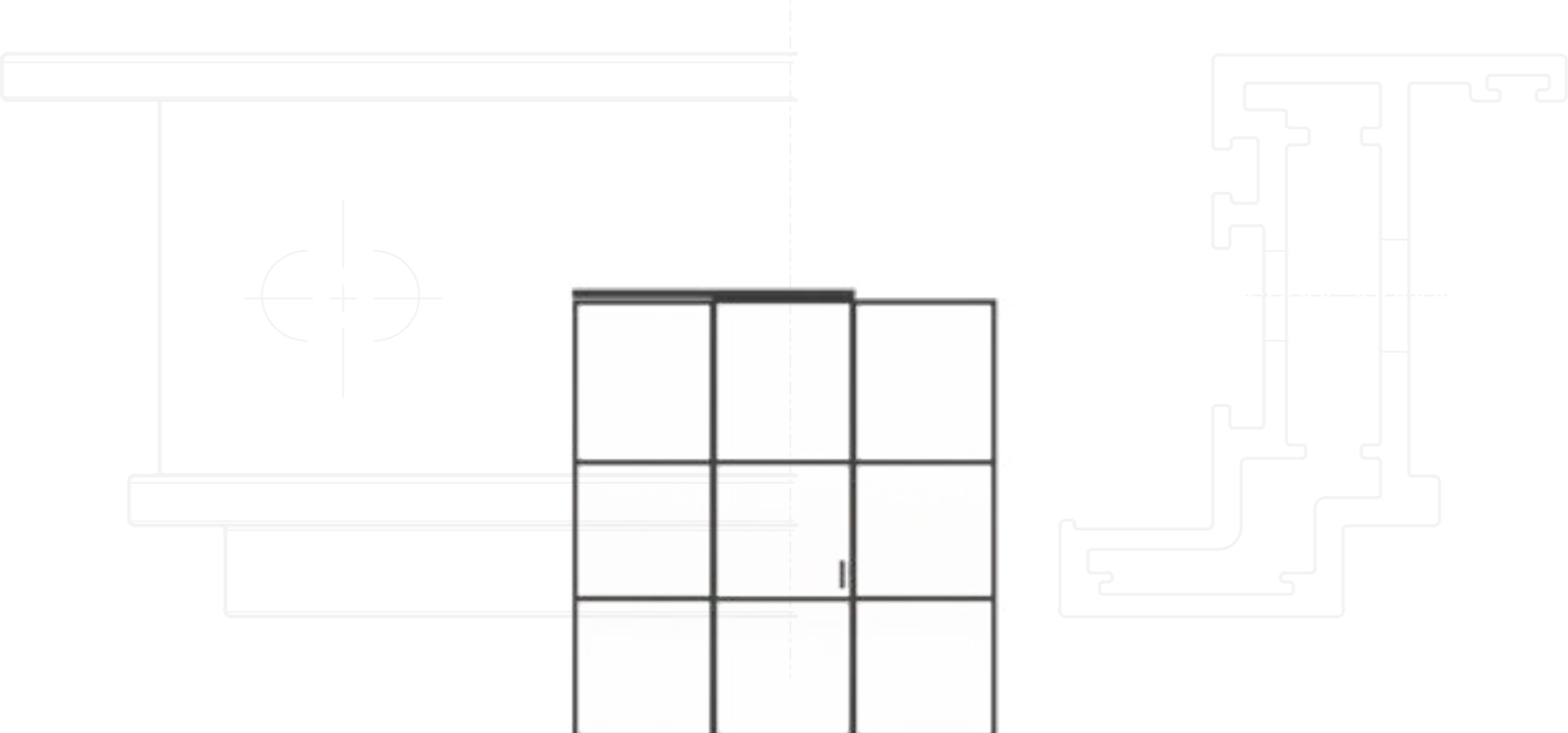


EXPLORE OUR SOUNDPROOF WINDOWS AND DOORS FOR A PEACEFUL RETREAT AT HOME.

CATALOG
2026



XS-ALU
BUILDING SYSTEMS



04

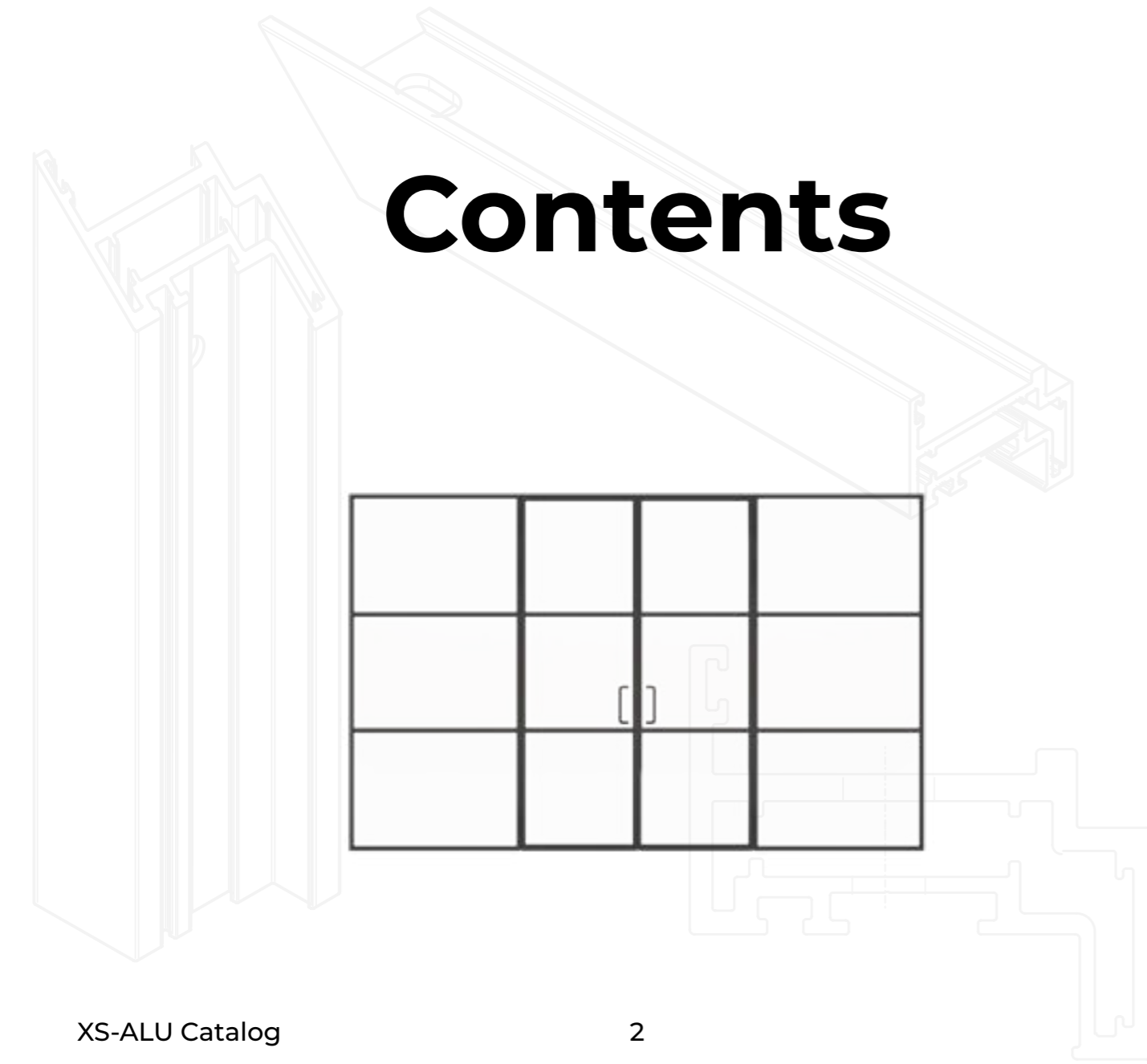
26

Contents

100

118

162



Development and testing

Our systems are developed in-house according to the needs of our customers, with a strong focus on being fully compatible with German hardware, which is durable, safe and extremely attractive. Our products are unique and distinguished by our Scandinavian architectural vision, extensive technical knowledge and use of first-class recycled materials.

With our office in Sopron, we are close to major transport infrastructures in the region. Our warehouse and production is located in Győr. Also in terms of infrastructure, environmental awareness and CO2 reduction are a major priority in our vision.

Our products have a simple yet efficient design: few parts, easy to assemble, cheaper to transport, modularly compatible with each other. LogiKal door and window manufacturing software facilitates production. Contact us to become a local sales representative. We are happy to be at your service!

CE Marked:

Ensuring Soundproofing and Weather Resistance

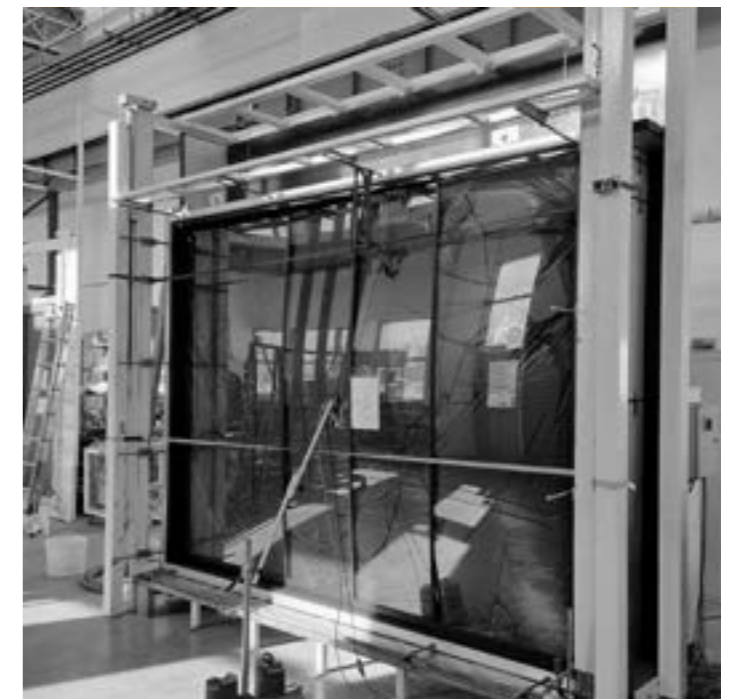
At XS-ALU Building Systems, we take great pride in our commitment to providing top-notch solutions for soundproofing and weather resistance. Our products, Solarisz and Modulusz, have undergone rigorous testing to ensure they meet the highest standards in these crucial areas.



Extreme Weather Resistance

Our sliding system is engineered to offer superior protection, even in the harshest weather conditions. We understand the importance of terrace and pergola glazings to withstand extreme winds, so we put our product through intensive testing at the ÉMI laboratory.

The results are impressive, as our sliding system has been tested with 2.8m height construction up to a pressure of 1800 Pa, which simulates wind speeds of approximately 190 km/h. This demonstrates its exceptional ability to withstand the most challenging weather conditions, providing peace of mind for our customers.





Modulusz:

Exceptional Soundproofing

Our Modulusz product family, including the Modulusz 50 door and partition wall building system, has been meticulously tested for its acoustic performance. We believe that sound-proofing is a critical factor in creating comfortable living and working spaces, especially in areas with high ceilings like attic apartments and offices. To ensure that our products meet the highest soundproofing standards, we partnered with a third-party NAH and CERTOP accredited laboratory for comprehensive testing. Our Modulusz system includes a range of components, including hinged doors, pivot doors, sliding doors, and glass partition walls. Achieving excellent soundproofing with narrow-profile designs can be challenging, but our team has risen to the occasion.

We analyzed and designed the system meticulously during the planning phase to optimize sound insulation. In addition to careful design, we have equipped our aluminium profile system with a special 3D movement mechanisms and silicone seals, further enhancing sound insulation.

Our commitment to real-world testing led us to conduct sound reduction tests at a higher level of sound pressure than the industry standard.

The results speak volumes: our Modulusz products achieve sound reduction levels ranging from 30 dB to an impressive 45 dB. To put this into perspective, a stan-



ard door typically offers sound reduction between 20 to 30 dB.

This exceptional soundproofing performance ensures that our Modulusz products create acoustically peaceful and comfortable environments for your projects.

At XS-ALU Building Systems, we are dedicated to exceeding expectations in soundproofing and weather resistance. Our CE Marked Modulusz system is a testament to our commitment to quality and innovation, providing you with the peace of mind and performance you demand for your construction projects.



Surface treatment



At XS-ALU Building Systems, our commitment to excellence extends beyond soundproofing and weather resistance; it also encompasses the quality and durability of the finish on our aluminium profiles. We understand the importance of aesthetics and long-lasting performance in architectural projects. That's why we adhere to the stringent Qualicoat standards for our painting method, ensuring the highest quality finish for our aluminium profiles.

Qualicoat Standards: Elevating the Standard of Finish

Qualicoat is a globally recognized standard for the quality and durability of coatings on aluminium profiles used in architectural applications. It sets rigorous benchmarks for the entire coating process, from pretreatment to application and final curing. By adhering to Qualicoat standards, we guarantee that our painted aluminium profiles meet the following key criteria:

Adhesion: Our coatings adhere firmly to the aluminium surface, preventing issues such as peeling or chipping over time.

Corrosion Resistance: The coatings provide exceptional protection against corrosion, ensuring that your architectural elements maintain their pristine appearance even in harsh environmental conditions.

Weather Resistance: Our profiles are designed to withstand UV radiation, extreme temperatures, and weather fluctuations without compromising their colour or finish.

Colour Uniformity: Qualicoat standards demand consistent colour throughout the entire profile, delivering a visually appealing and uniform appearance.



Our commitment to quality, innovation, and adherence to industry standards like Qualicoat reflects our dedication to provide you with the best products for your construction and architectural projects.



Gloss and Texture: The finish on our profiles meets stringent requirements for gloss levels and texture, ensuring a high-quality aesthetic finish that aligns with your architectural vision.

By following Qualicoat standards, we ensure that our painted aluminium profiles not only meet but exceed industry expectations for quality and durability. Whether it's the extreme weather resistance of our Radical system, the exceptional soundproofing of our Modulusz products, or the long-lasting, pristine finish on our profiles, XS-ALU Building Systems is your trusted partner for architectural solutions that excel in every aspect.





ACCESSORY VARIATIONS

ACCESSORY VARIATIONS











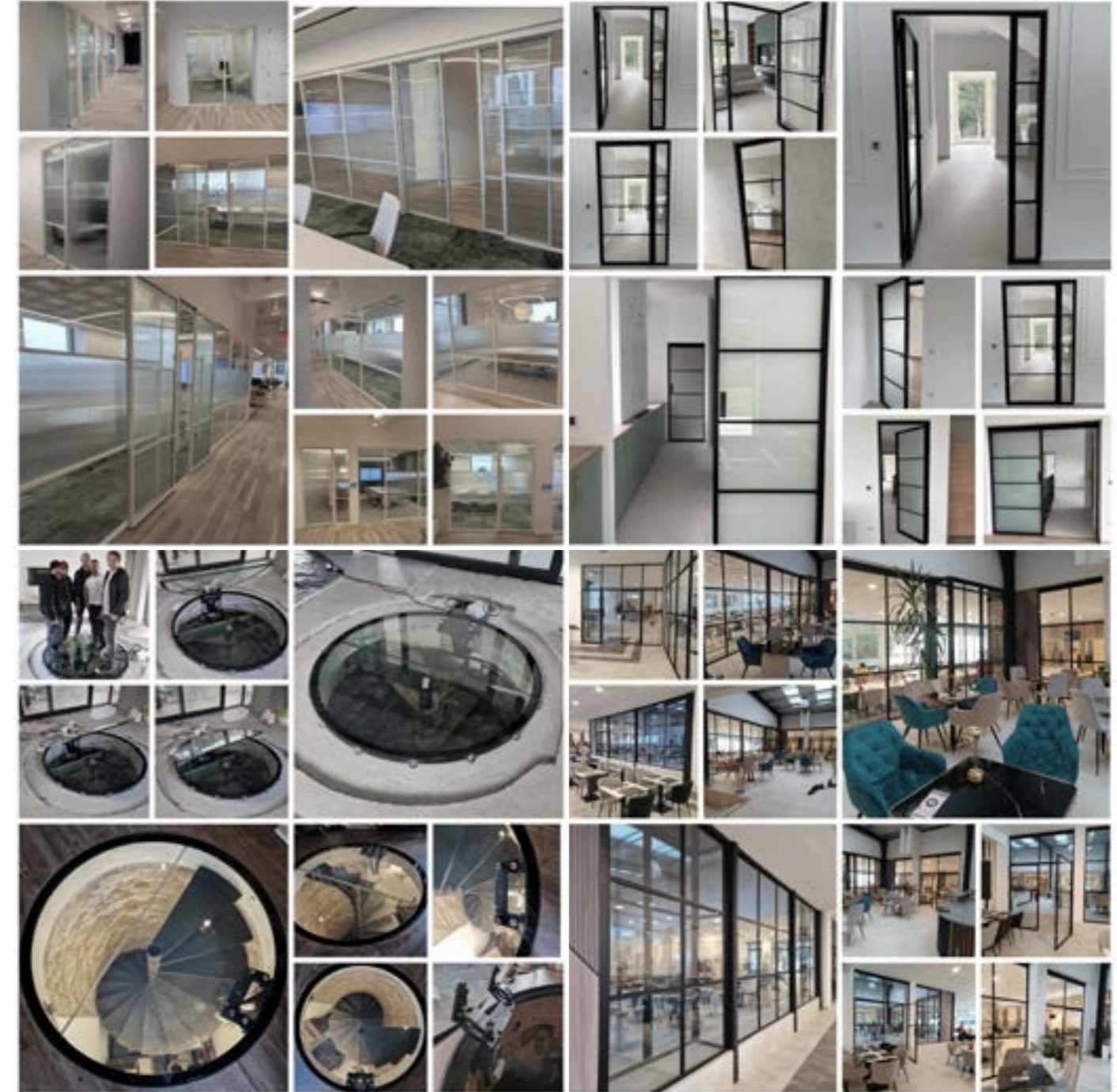
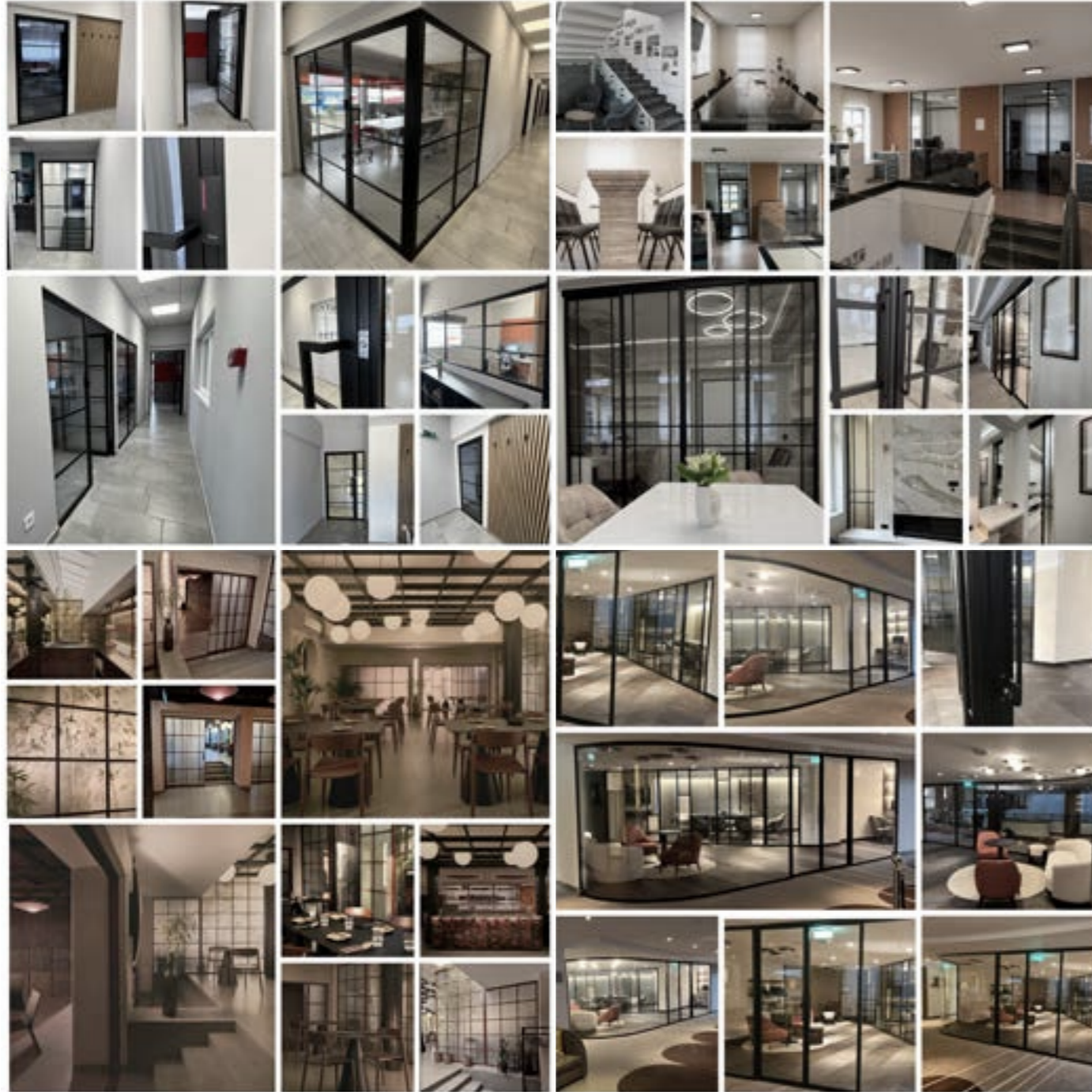
Modulusz Hinged Door



Precision in Practice: Our Projects

Witness the exceptional performance of our narrow-profile aluminium glazed doors and partitions. This portfolio showcases real-world applications where cutting-edge innovation meets elegant design.

Go beyond the specifications and feel the difference! Discover how our solutions create stunning, acoustically optimized, and sustainable spaces. Be inspired for your next project.





Modulusz Pivot Door

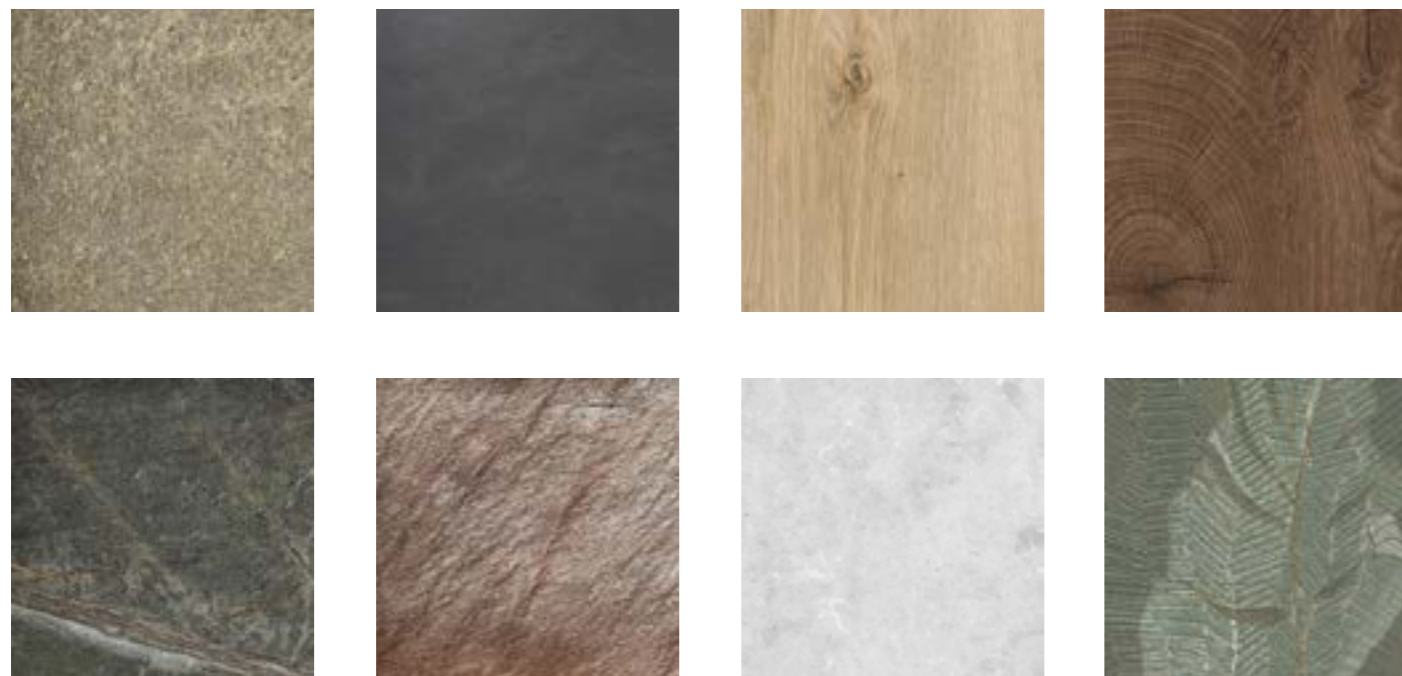




COVER VARIATIONS

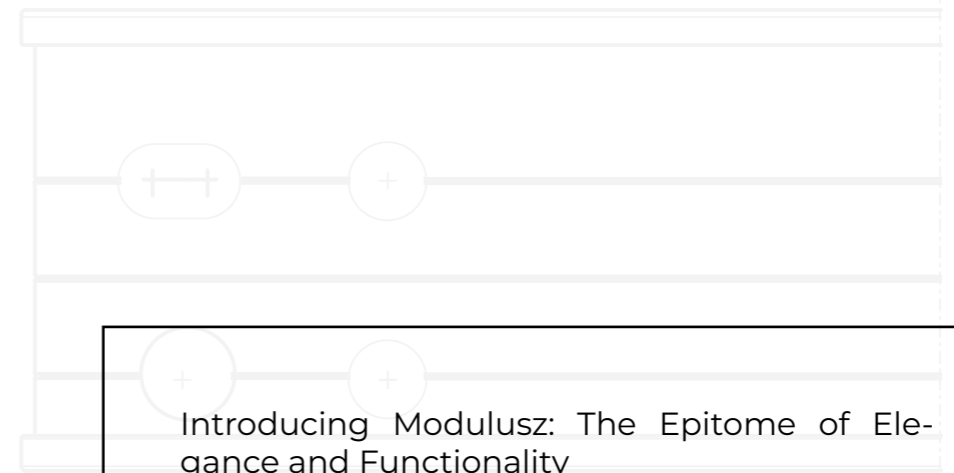


GLASS VARIATIONS





MODULUSZ 50

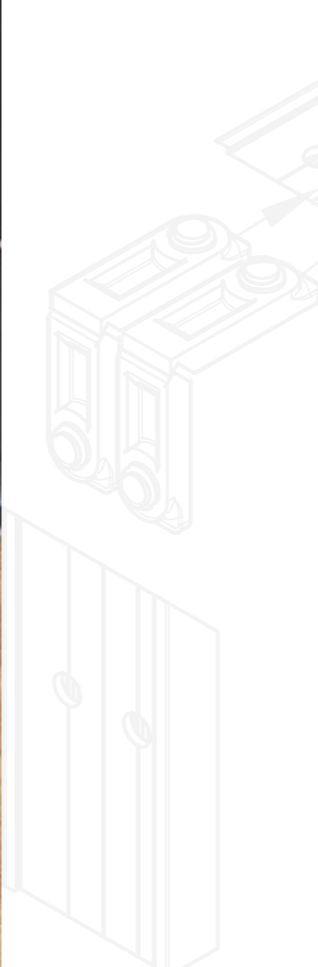


Introducing Modulusz: The Epitome of Elegance and Functionality

Discover the perfect blend of sleek aesthetics, minimalistic design, and superior performance with our Modulusz slim line aluminium system. Handcrafted in Hungary, this glazed aluminium system is meticulously designed to elevate your living space while offering remarkable sound-proofing capabilities.

We understand the importance of functionality and convenience and put efforts into Modulusz to achieve the best sliding mechanism with smooth gliding motion and whisper-quiet movement.

At XS-ALU, we take pride in our commitment to sustainability. Modulusz is not only visually stunning, but it is also built to last, using high-quality materials that contribute to the longevity of the product. Our environmentally conscious manufacturing processes ensure a minimal carbon footprint.



Modulus 50

Single glazed partition



Environmentally friendly



Designed for interiors



Compatible with door system



Max. glass weight: 180 kg



Fast assembly, click-connect



Weldable aluminium



Max. sound reduction
Rw: 31-41dB





The Moduluz 50 glazed partition system was designed to be sleek and minimalistic, similar to French steel partitions and frames.

It was developed for high sound insulation and is compatible with Moduluz doors equipped with precision 3D adjustable hinges and silicone gaskets.

All aluminium materials used during the production of this system are 50% recycled. Our goal is to improve acoustic performance to lower carbon emissions and the ecological footprint in the building sector.

The fixed frames can accommodate single or double-glazed units with sound insulation between 31 and 41 dB.

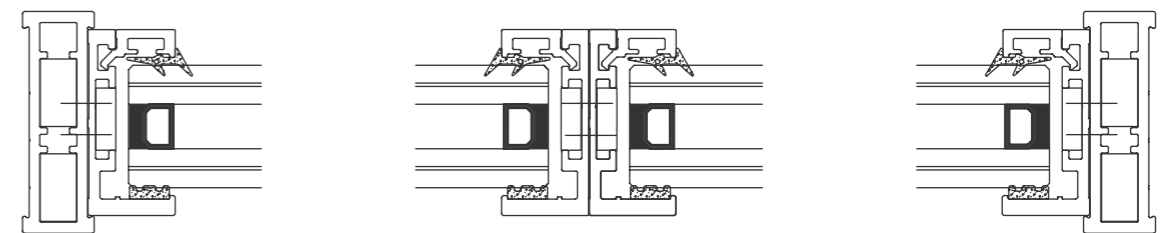
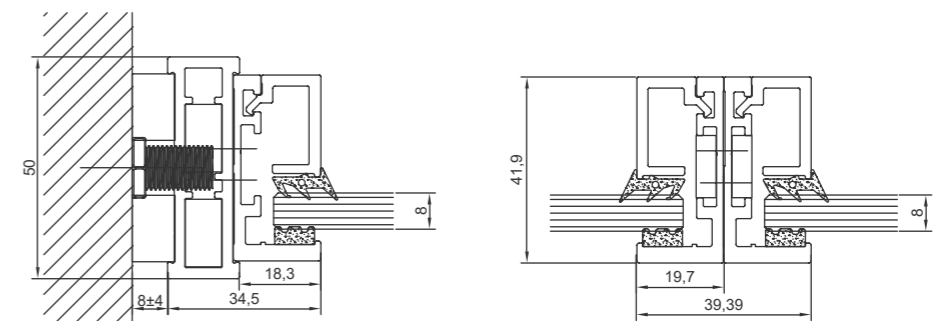
The system makes it possible to mount single or double hinged or pivot doors. The design of the glazed partition system is perfect for buildings with a minimalist or industrial design or even for traditional homes, loft flats, offices and patios.

Glass: single glazed or DGU acoustic

Framing: weldable or click connect

Frame size: W34.5*50mm

Gaskets: silicone or foam filling

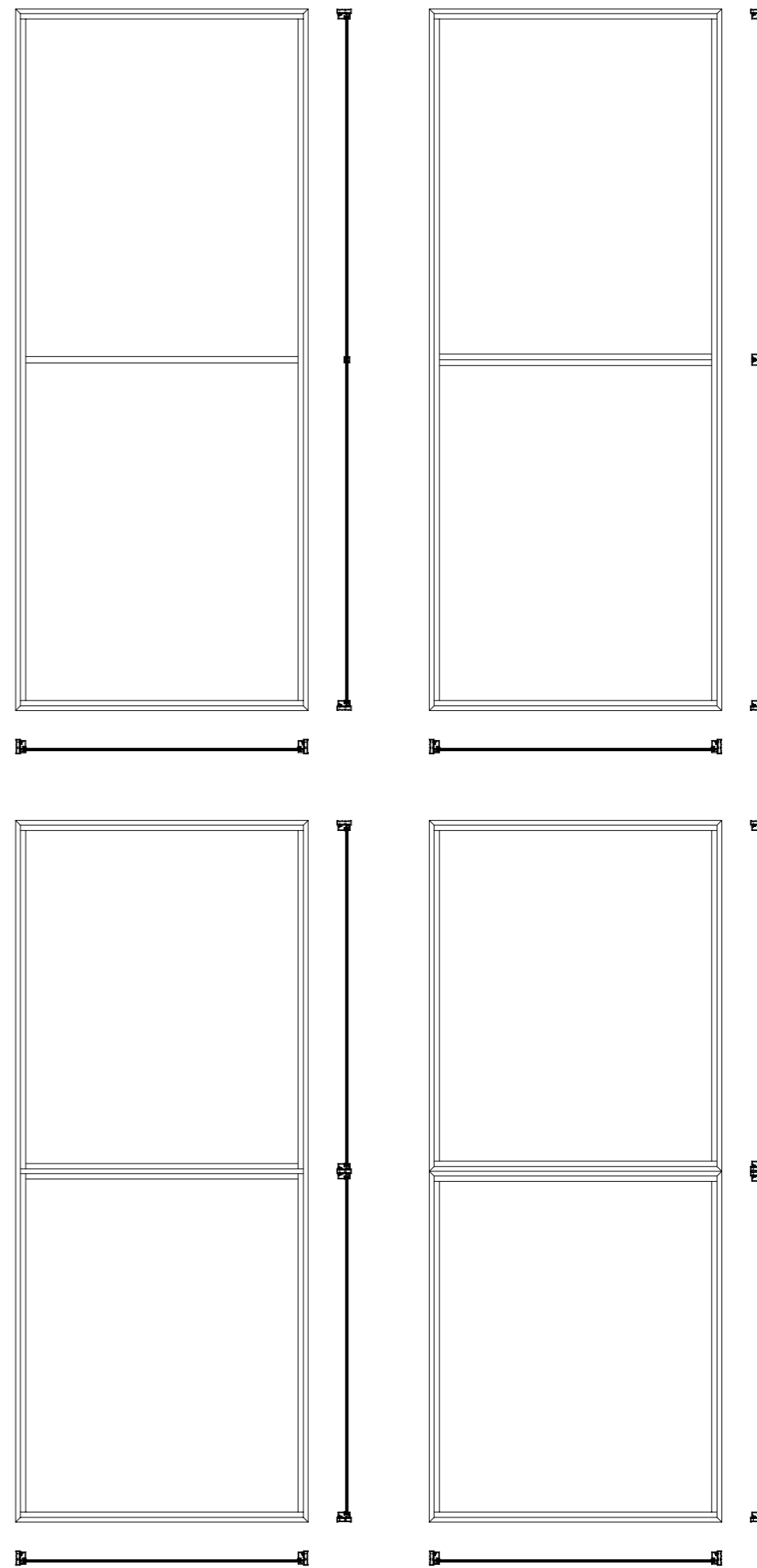
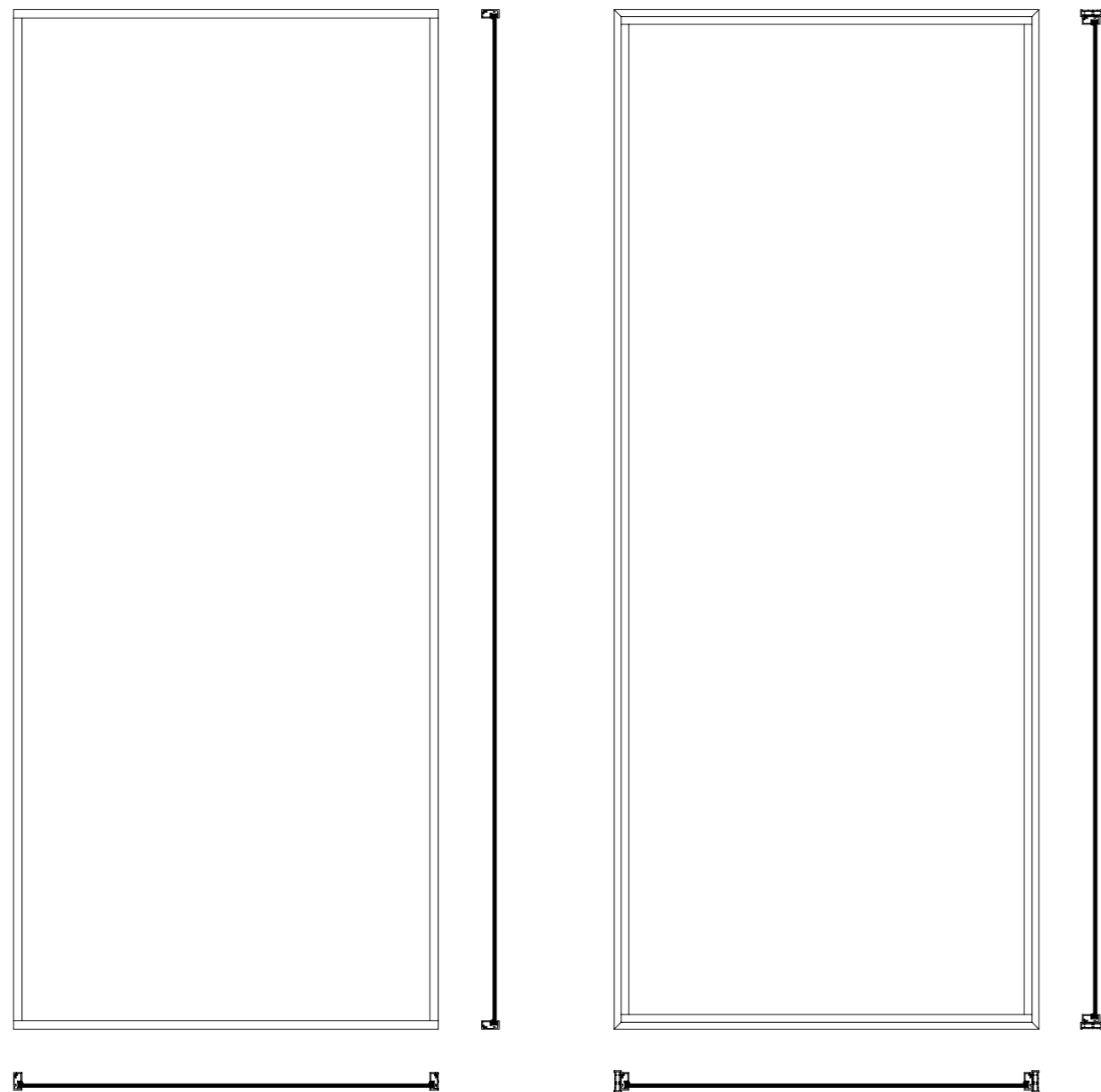




Modulus 50

Single glazed fixed partition

VARIATIONS



Modulus 50

Twin glazed partition



Environmentally friendly



Designed for interiors



Compatible with door system



Max. glass weight: 360 kg



Fast assembly, click-connect



Weldable aluminium



Max. sound reduction
Rw: 38-45dB





Our Moduluz 50 Twin double glazed symmetrical partition system combines elegance and practicality. The system is specifically designed for office partitioning or use in lecture and meeting rooms. Thanks to the twin glazing, it provides higher sound insulation and better sound reflection in the interior.

All aluminium materials used during the production of this system are 50% recycled materials.

Our goal is to improve acoustic performance to lower carbon emissions and the ecological footprint in the building sector.

Our Twin glass wall system provides sound insulation of 38-45 dB, depending on whether you choose tempered or sound insulating laminated glass. In addition, on-site installation is quicker as it can be prefabricated in modules.

This product is compatible with our Moduluz 50 sliding and hinged door system.

Glass: twin glazed tempered or laminated

Door: Moduluz 50

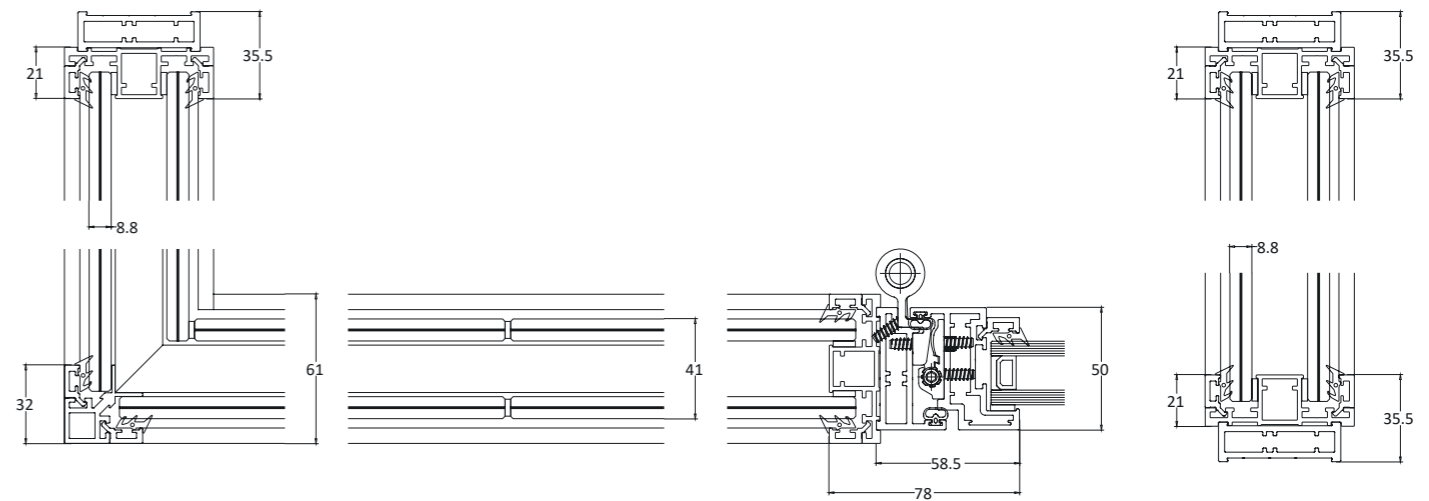
Lock: roller catch or mortice

Hinges: 3D adjustable, developed with Dr. Hahn

Framing: weldable or click connect

Frame size: W21*61mm

Gaskets: rubber seal or foam filling

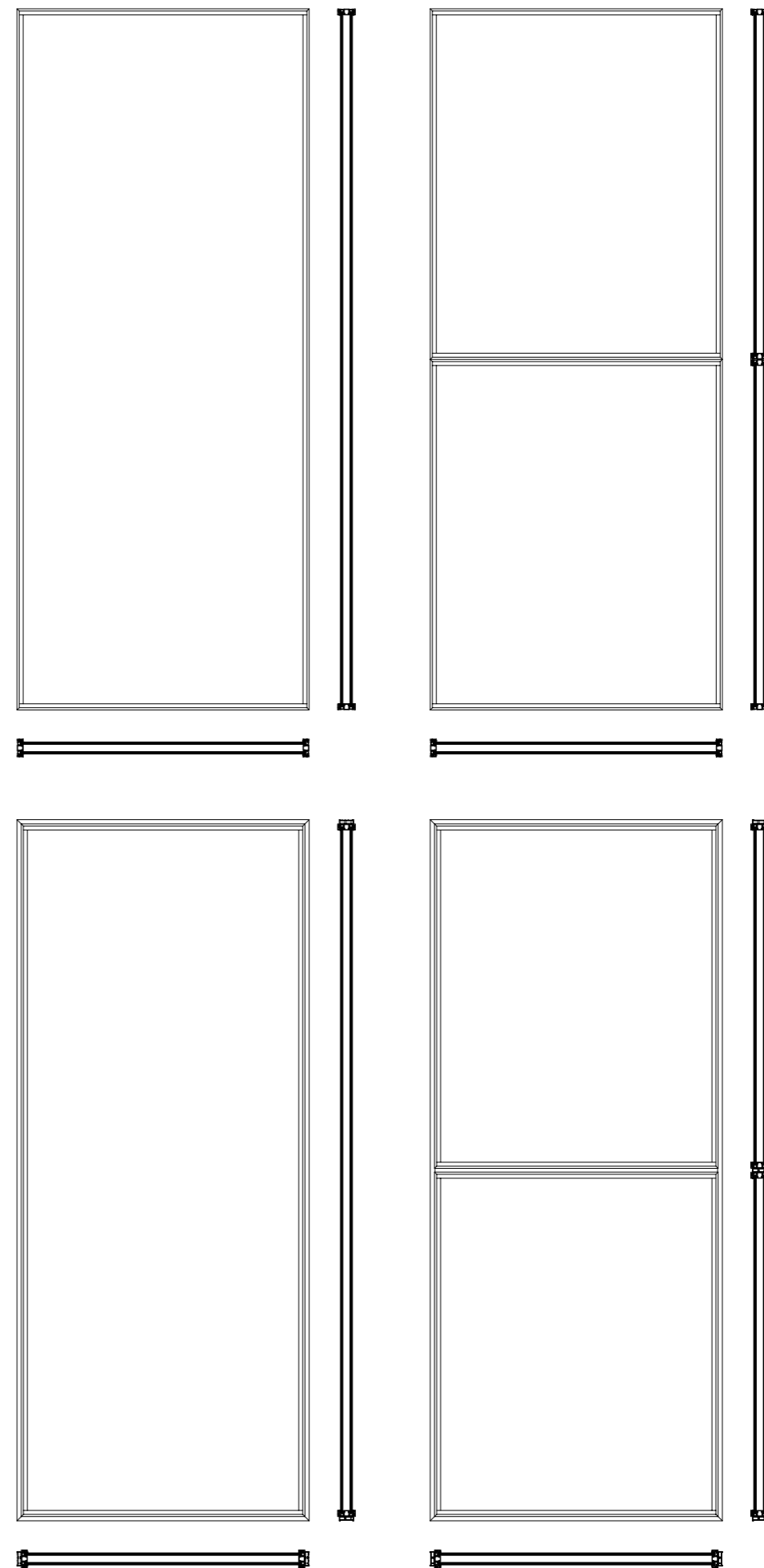
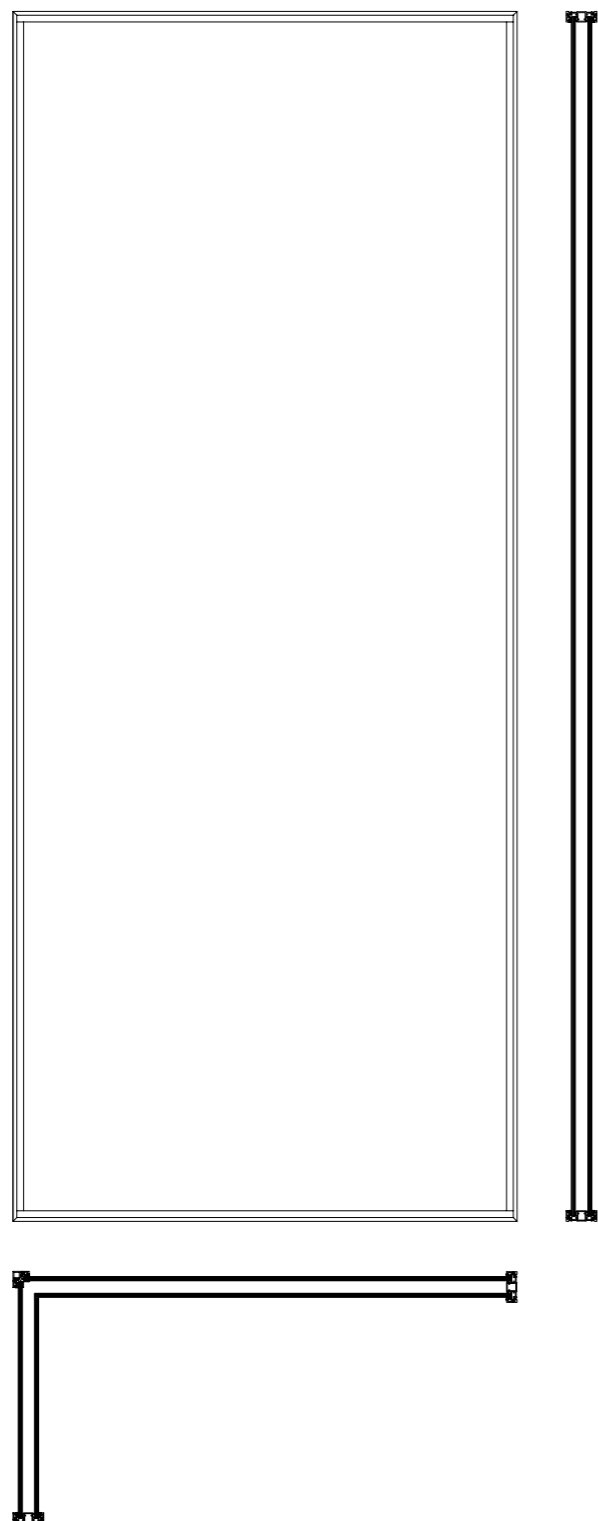




Modulus 50

Twin glazed partition

VARIATIONS



Modulus 50

Hinged door



Environmentally friendly



Designed for interiors



Hinged door & frame system



Max. leaf weight: 150 kg



3D adjustable hinges



Fast assembly, click-connect



Weldable aluminium



Max. sound reduction
Rw: 31-40dB





The Modulus 50 glazed hinged door and partition system was designed to be sleek and minimalistic, similar to French steel doors and frames.

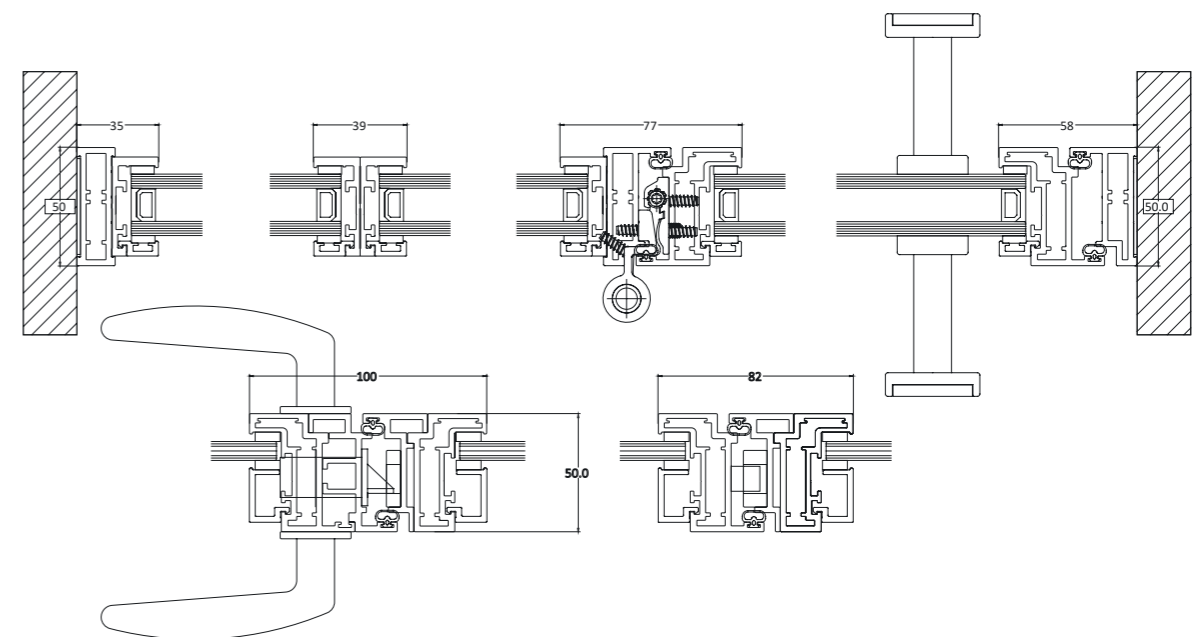
It was developed for high sound insulation and is equipped with precision 3D adjustable hinges and silicone gaskets.

All aluminium materials used during the production of this system are 50% recycled. Our goal is to improve acoustic performance, to lower carbon emissions and the ecological footprint in the building sector.

The doors and the fixed frames can accommodate single or double glazed units with sound insulation between 31 and 40dB.

The system makes it possible to mount single or double hinged or pivot doors. The design of the glazed partition system is perfect for buildings with a minimalist or industrial design or even for traditional homes, loft flats, offices and patios.

- Glass: single glazed or DGU acoustic
- Lock: roller catch or mortice on request
- Hinges: 3D adjustable, developed with Dr. Hahn
- Framing: weldable or click connect
- Frame size: W34.5*50mm
- Frame + leaf size: W58*50mm
- Door leaf size with roller portal lock: W82*50mm
- Double-leaf size with roller catch: W100*50mm
- Gaskets: silicone or foam filling
- Operation: manual



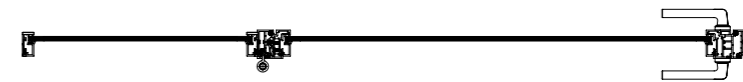
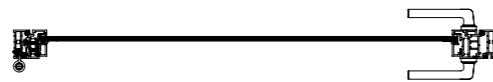
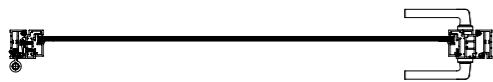
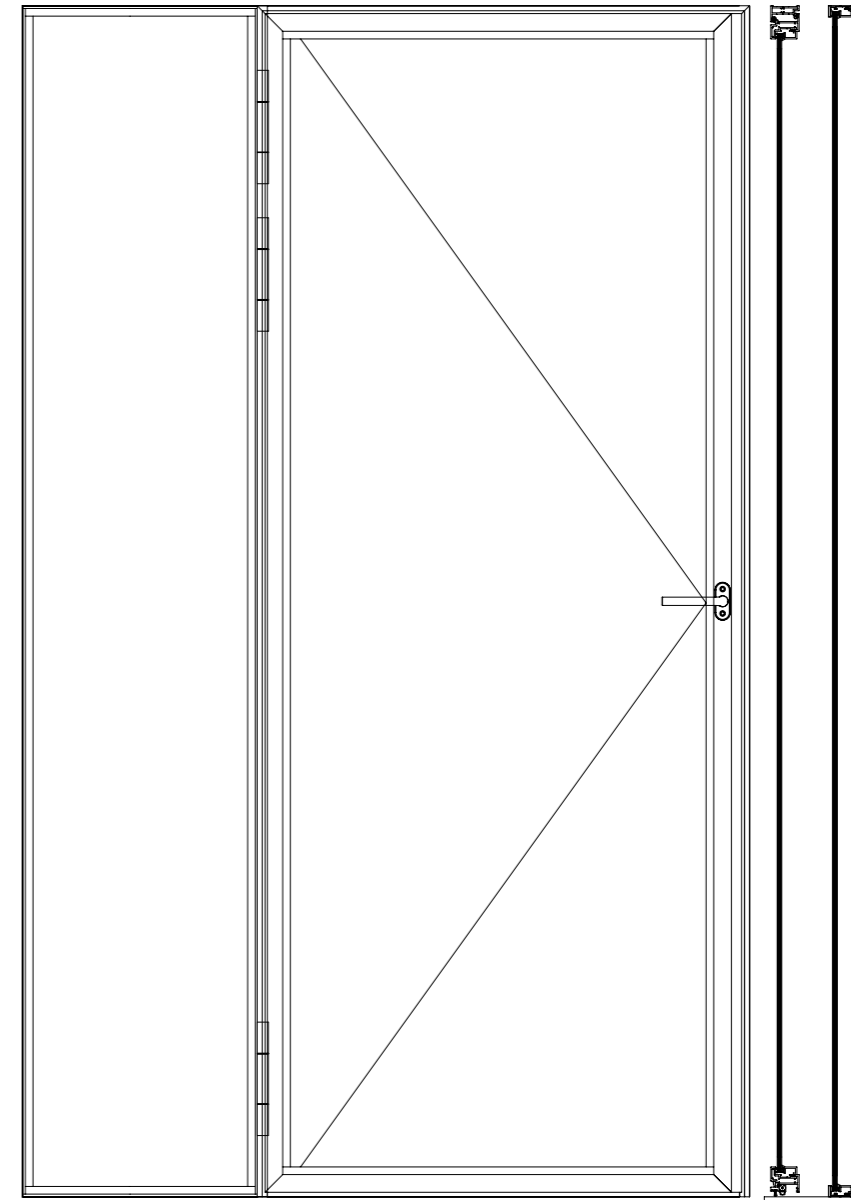
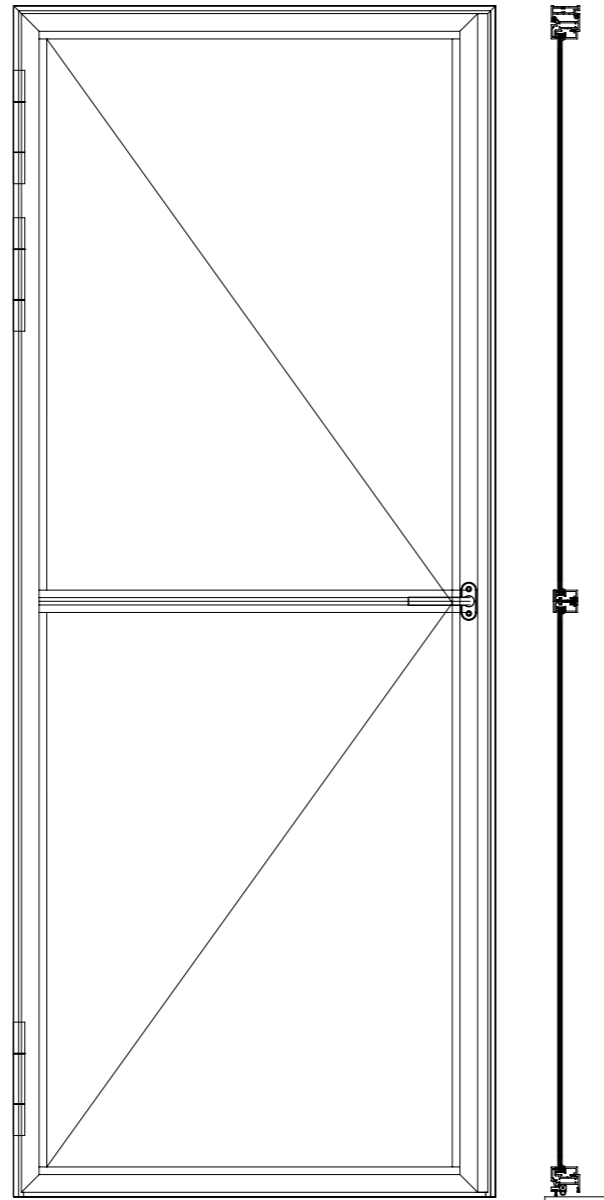
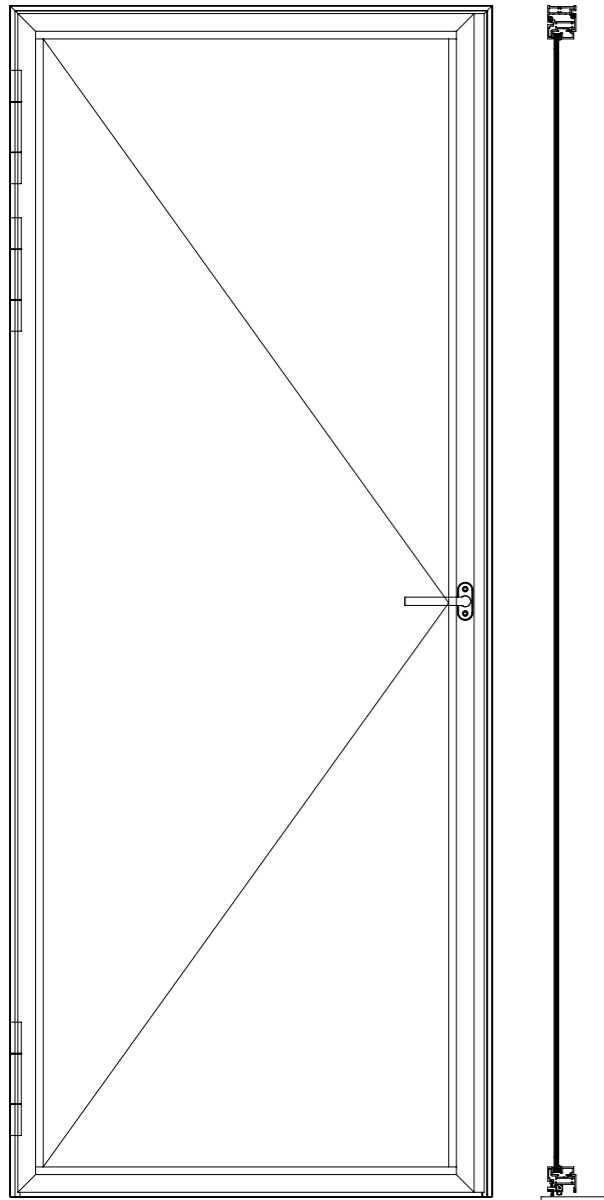


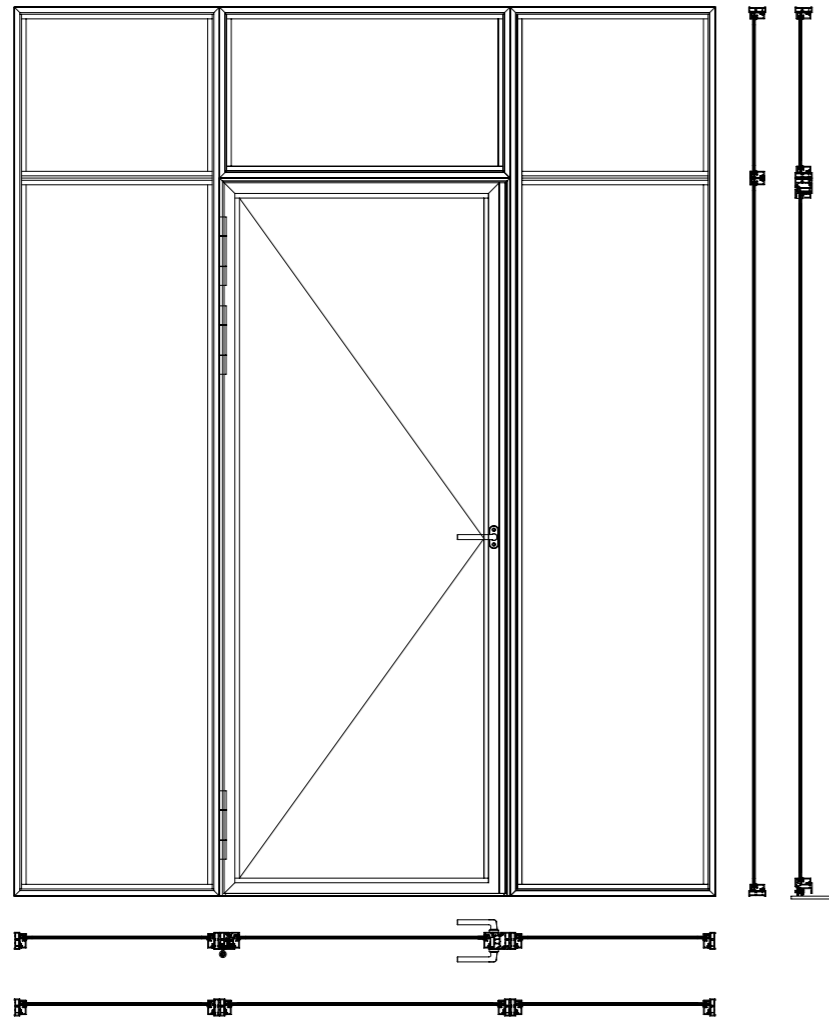
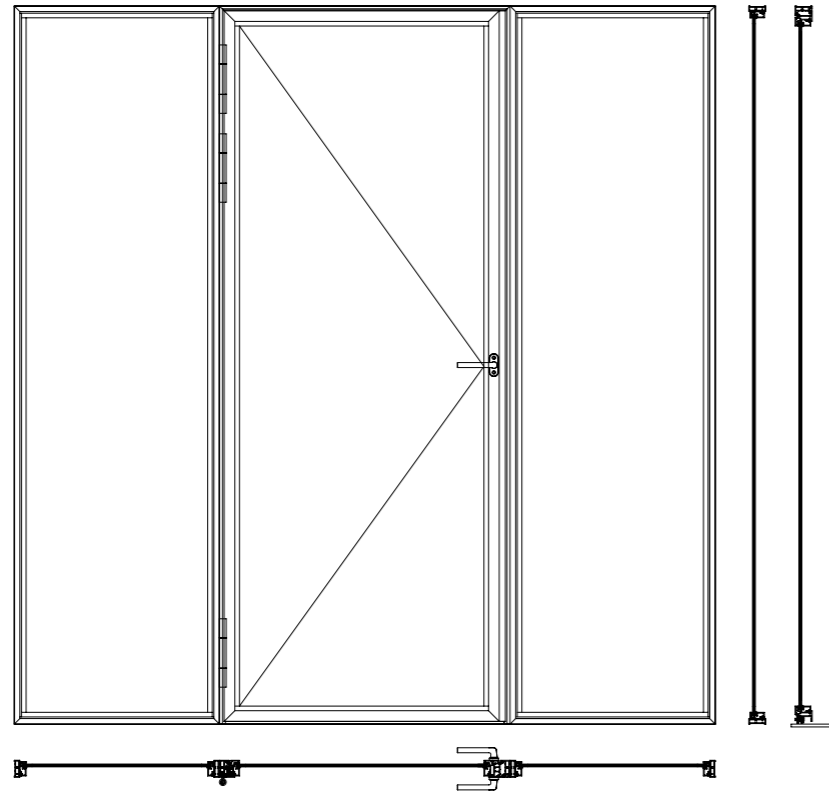




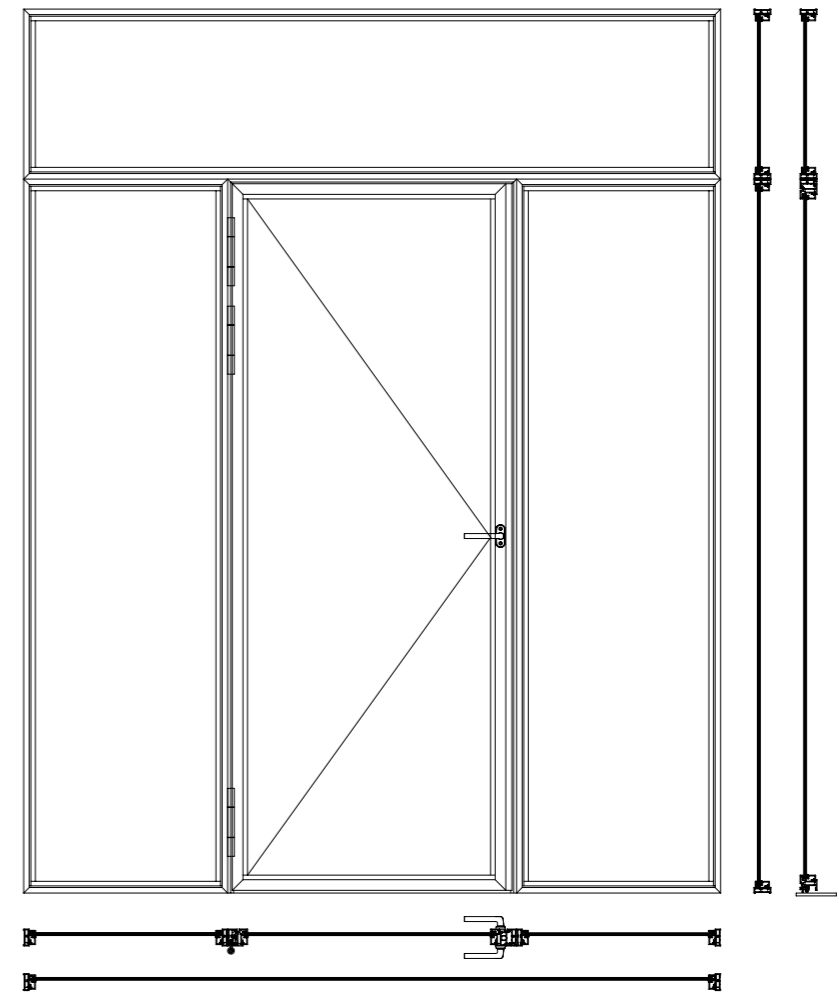
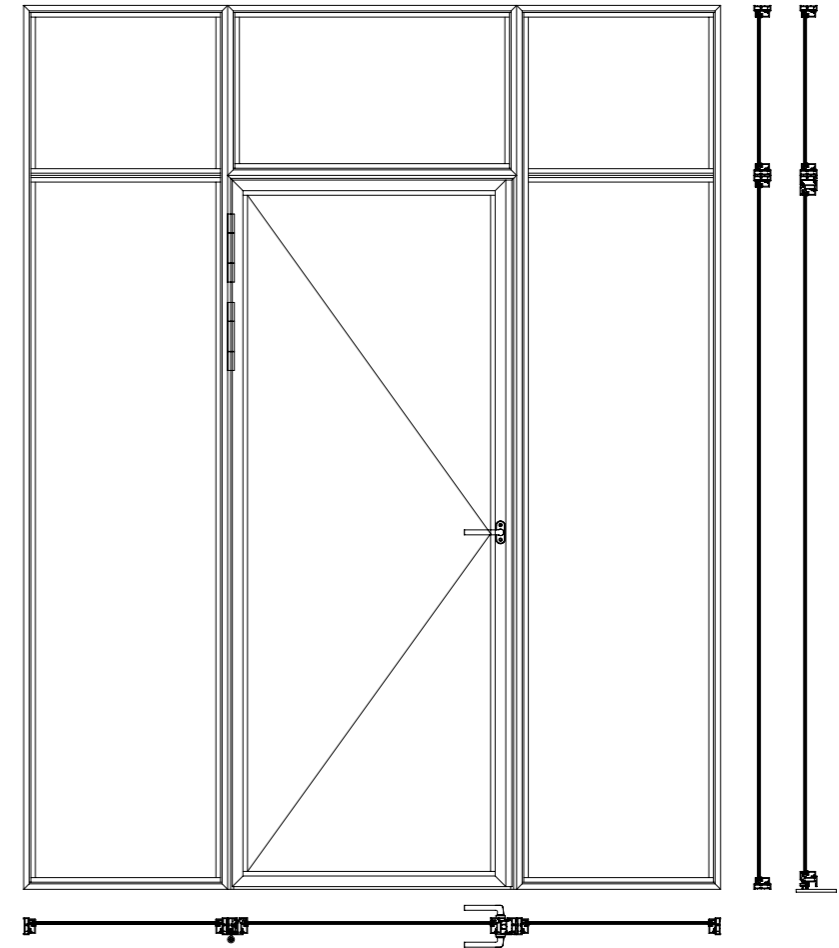
Modulus 50

Single leaf door variations
with mortice lock





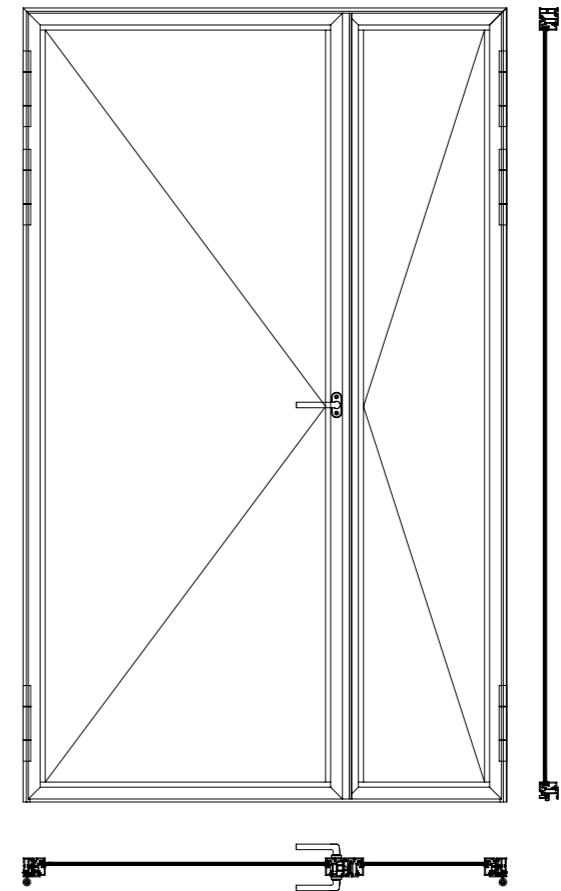
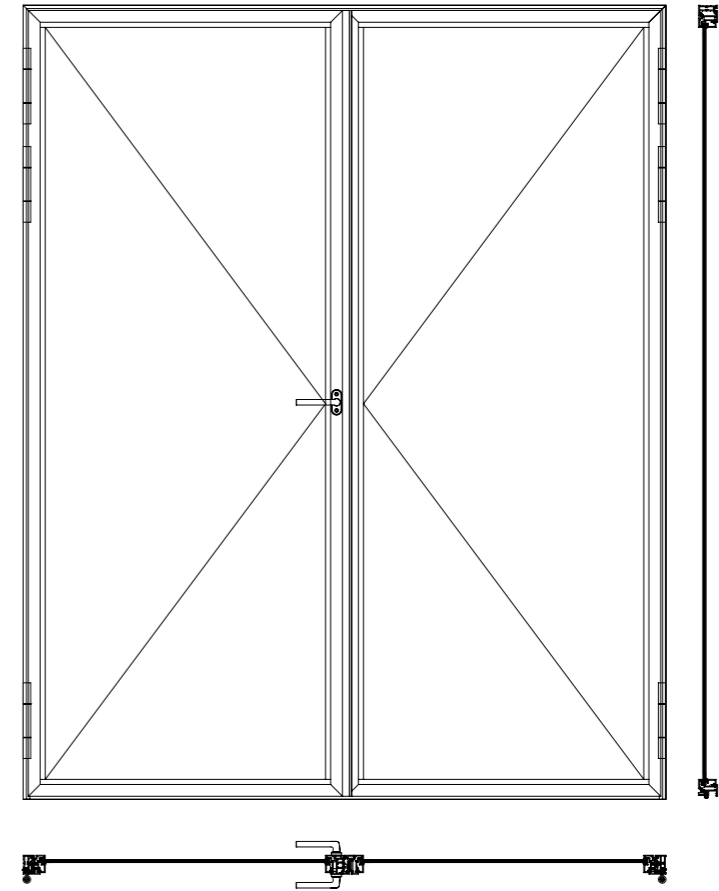
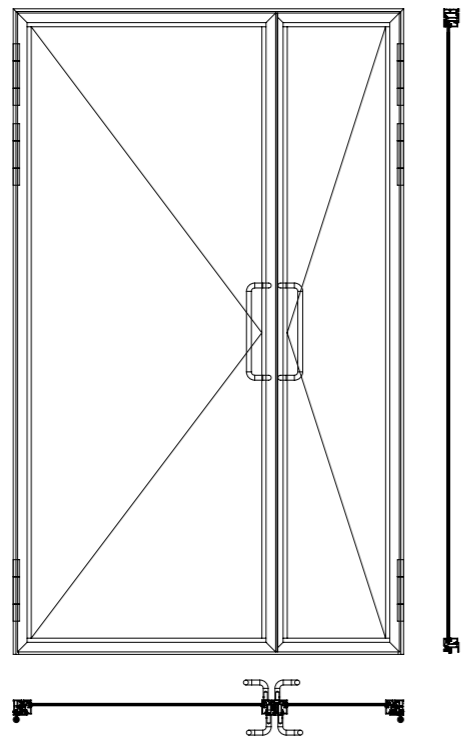
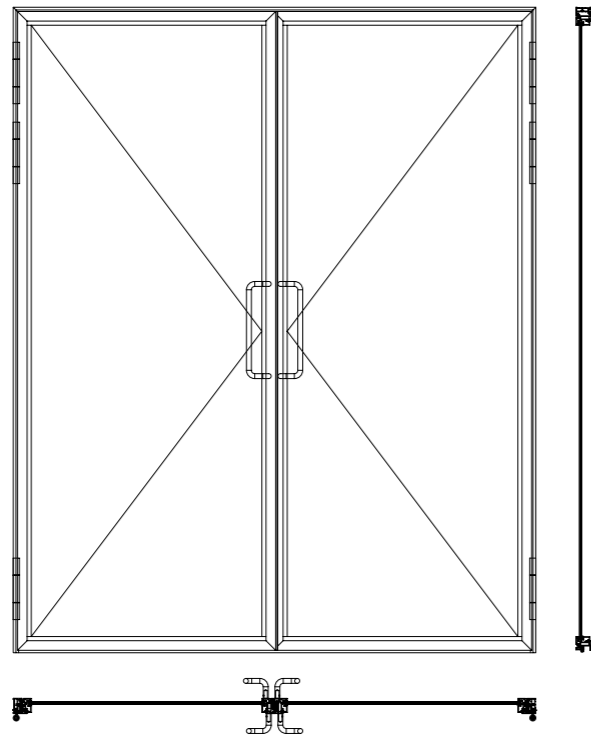
56



57

Modulus 50

Double leaf door variations



Modulus 50

Esthetic Glass



Environmentally friendly



Designed for interiors



Hinged door & frame system



Max. leaf weight: 150 kg



3D adjustable hinges



Fast assembly, click-connect



Weldable aluminium



Max. sound reduction
Rw: 30-38dB





The Modulusz Esthetic Glass Door is designed to embody elegance and sophistication. Featuring glued glass on both sides of the leaf, this door delivers stunning visual appeal while maintaining a sleek, minimalistic profile.

Engineered for excellent sound insulation, the door incorporates precision 3D adjustable hinges and silicone gaskets, ensuring both functionality and style.

Constructed with 50% recycled aluminium materials, this aesthetic door enhances acoustic performance while reducing carbon emissions and minimizing the ecological footprint in the building sector.

Compatible with 4mm to 8mm glazed units, it provides sound insulation ratings between 30dB and 38dB. This versatile door system allows for the installation of single or double hinged doors, making it ideal for a variety of settings—from traditional homes and lofts to offices and patios.

Glass: single glazed or acoustic

Lock: roller catch, mortice or panic

Hinges: 3D adjustable

Framing: weldable or click connect

Frame size: W34.5*50mm

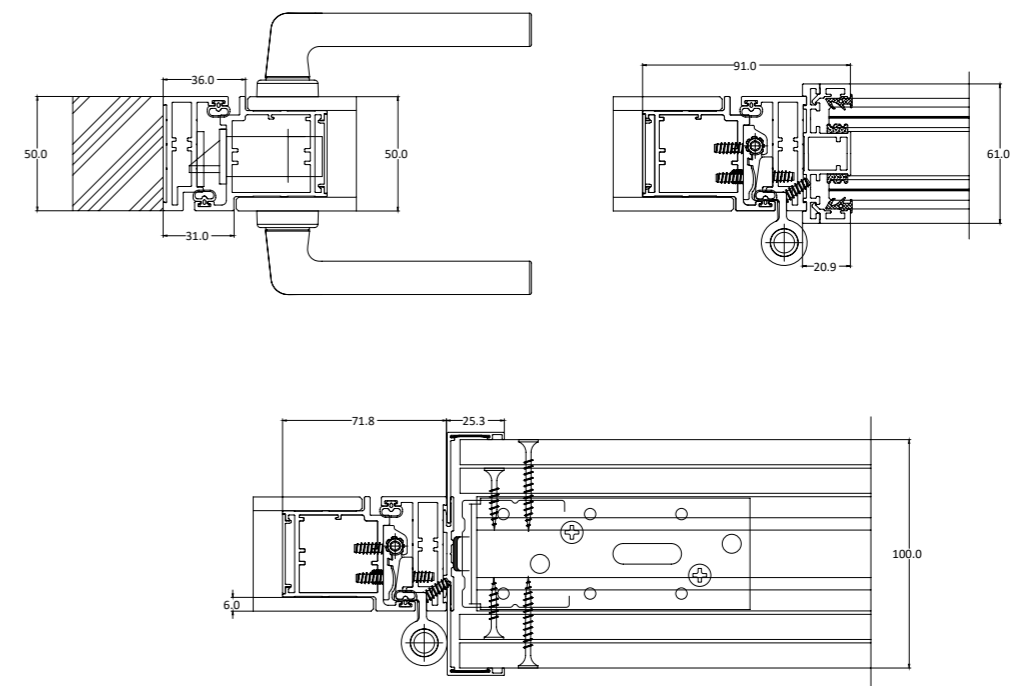
Frame + leaf size: W72*50mm

Double-leaf size with roller catch: W109*50mm

Gaskets: silicone or foam filling

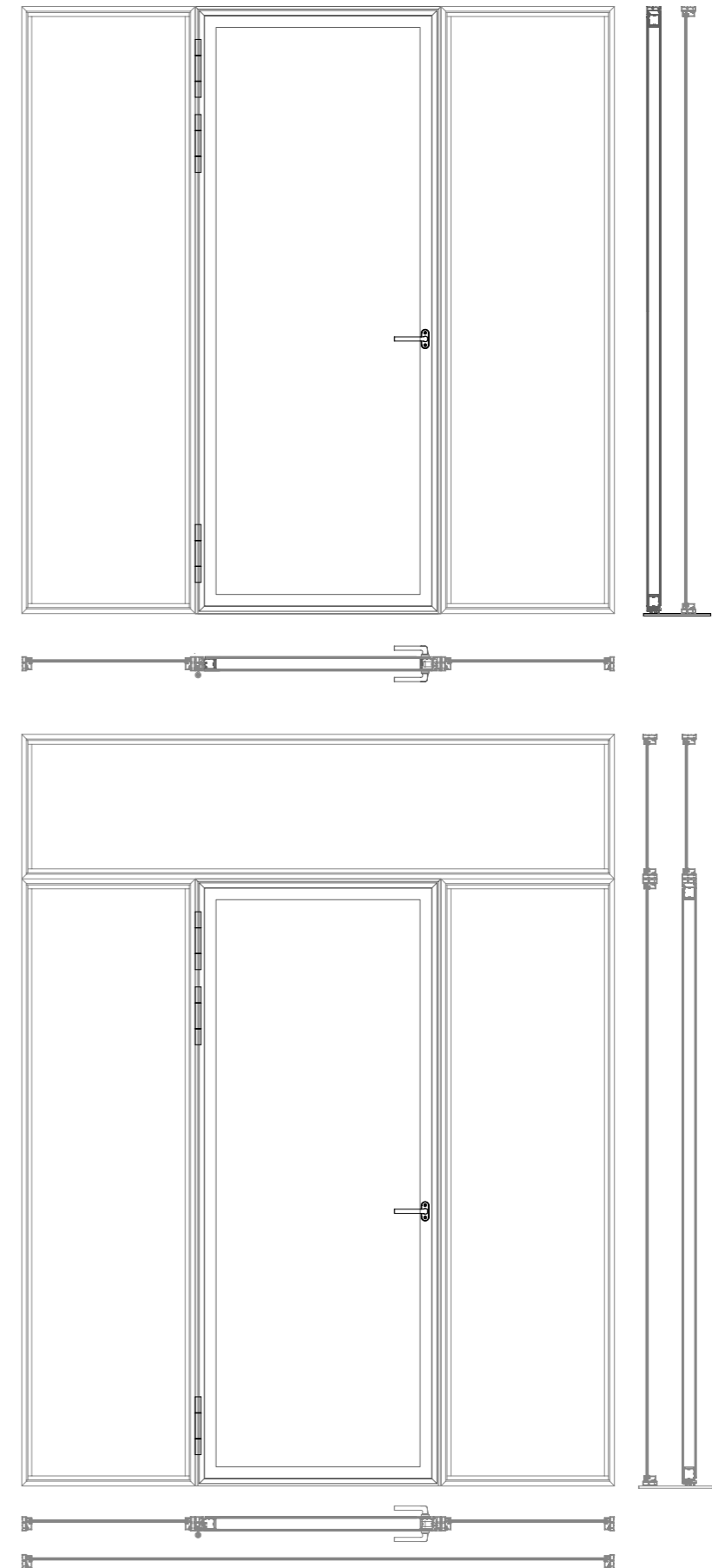
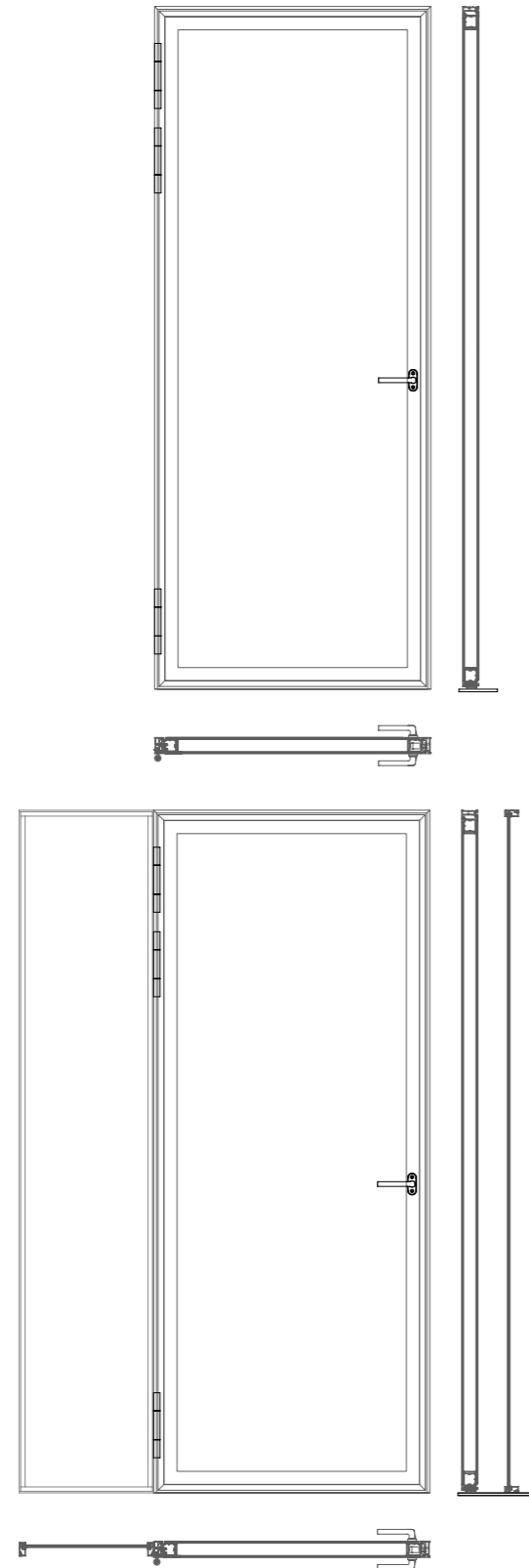
Operation: manual, self-closing

Closing device: concealed door closer



Modulus 50

Esthetic Glass door variations



Modulus 50

Esthetic Natural



Environmentally friendly



Designed for interiors



Hinged door & frame system



Max. leaf weight: 150 kg



3D adjustable hinges



Fast assembly, click-connect



Weldable aluminium



Max. sound reduction
Rw: 30-38dB





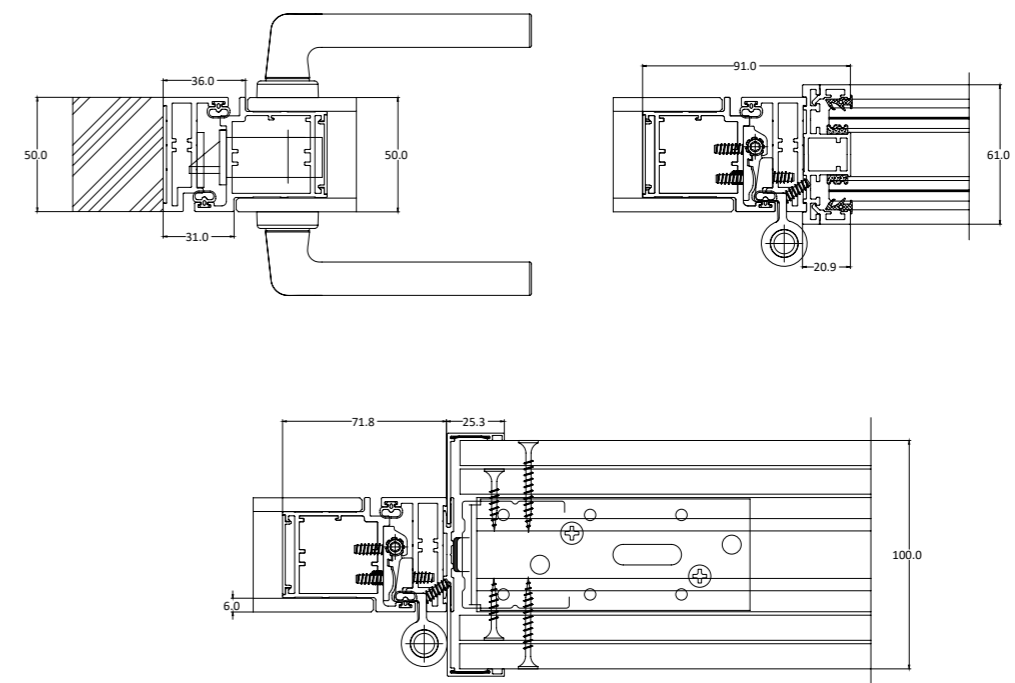
The Modulusz Esthetic Natural Door beautifully blends natural materials with modern design. Featuring a customizable aluminium frame, this door can be finished with wood, ceramic tiles, or stone, allowing it to fit seamlessly into any space.

Designed to mimic the elegance of wood or ceramics, it offers the warmth of natural elements while ensuring the durability and low maintenance of aluminium.

Engineered for superior sound insulation, the door includes precision 3D adjustable hinges and silicone gaskets, combining functionality with style. Made from 50% recycled aluminium, this door enhances acoustic performance while reducing carbon emissions and minimizing the ecological footprint.

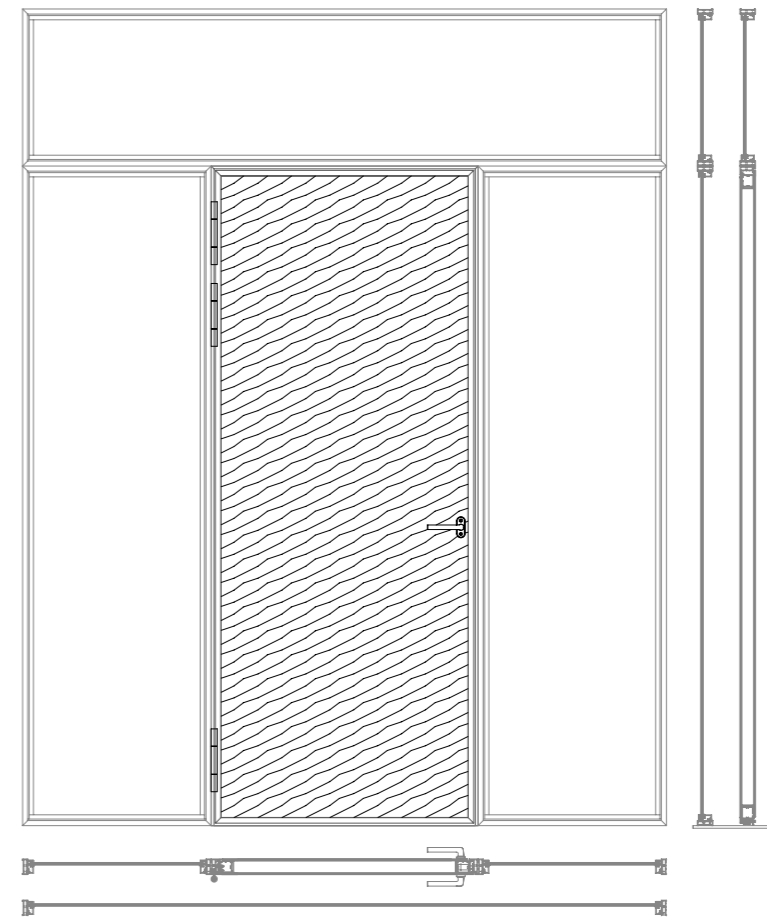
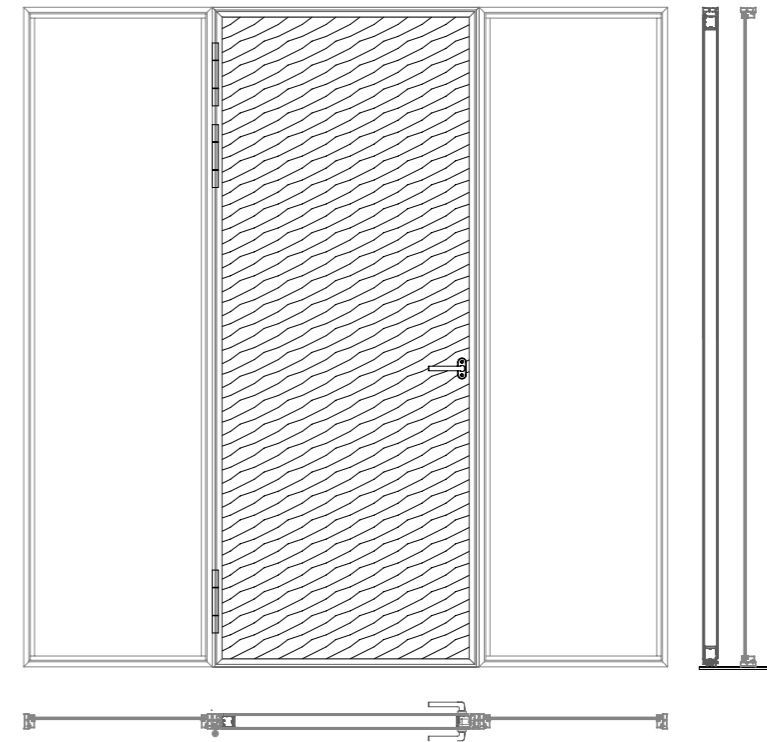
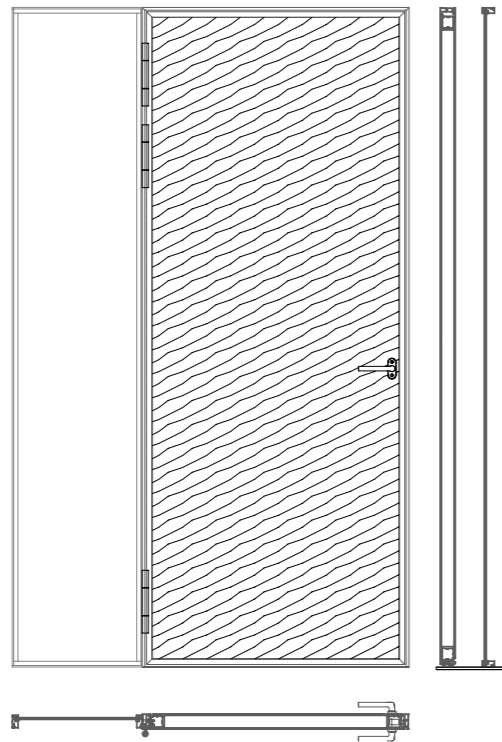
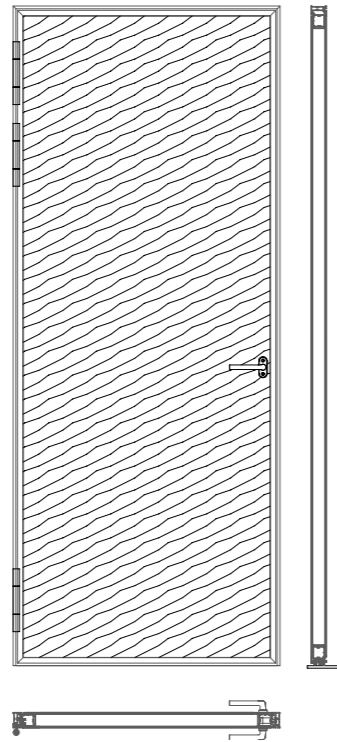
Versatile and adaptable, it can incorporate ceramic tile sheets for bathroom use, making it perfect for a variety of settings—from cozy homes and stylish lofts to modern offices and elegant bathrooms.

- Cover: wooden, metal or ceramic sheet
- Lock: roller catch, mortice or panic
- Hinges: 3D adjustable
- Framing: weldable or click connect
- Frame size: W34.5*50mm
- Frame + leaf size: W72*50mm
- Double-leaf size with roller catch: W109*50mm
- Gaskets: silicone or foam filling
- Operation: manual, self-closing
- Closing device: concealed door closer



Modulus 50

Esthetic Natural door variations



Modulus 50

Sliding door



Environmentally friendly



Designed for interiors



Sliding door & frame system



Max. leaf weight:
150 kg



3D adjustable hinges



Fast assembly,
click-connect



Weldable aluminium



Max. sound reduction
Rw: 32-41dB





The Moduluz 50 glazed sliding door system is equipped with a revolutionary 3-axis linear sliding mechanism, developed and produced by XS-ALU Building Systems.

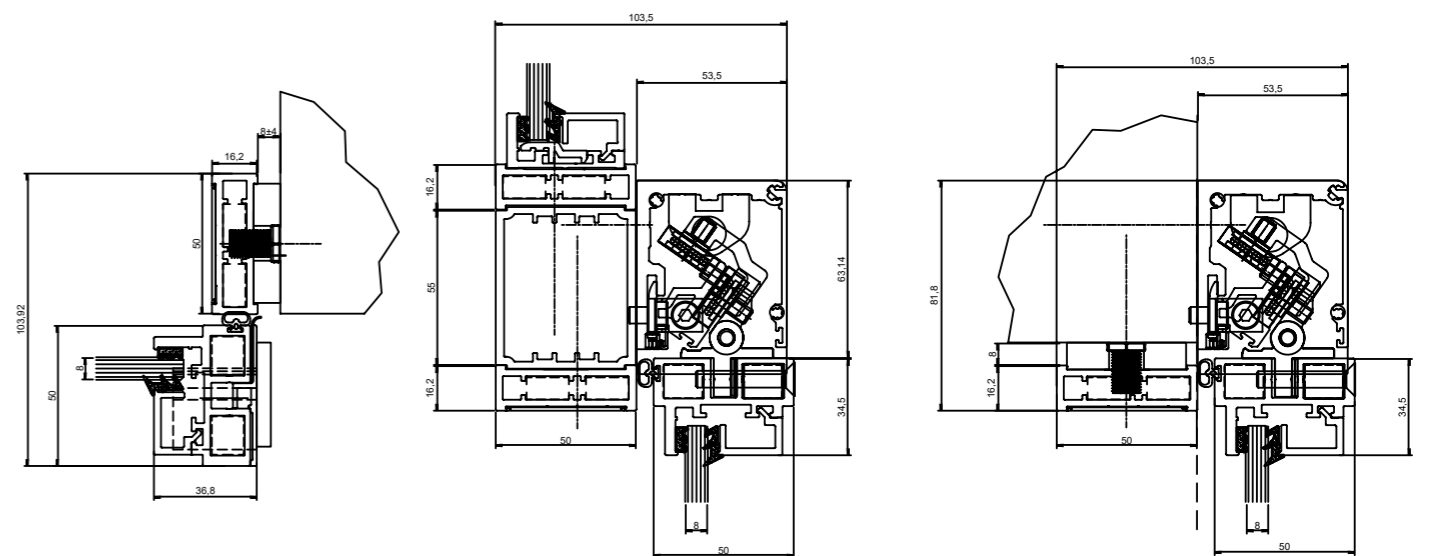
This simple yet game-changing 3D sliding system is made of marine-grade aluminium and stainless steel with silicone gaskets. It can reduce the sound level by as much as 32-41 dB, and keep out dust and odours from adjacent rooms.

The doors and the fixed frames can be equipped with single or double glazed units with high sound insulation values.

The profile system with extra narrow profiles and sleek design makes it possible to install the door in an existing metal frame or partition system. This opens up new areas of application where high soundproofing performance is required.

The sliding doors with a glazed partition system can be manufactured in minimalist or industrial designs for traditional homes, loft flats or offices.

- Glass: single glazed or DGU acoustic
- Lock: can be chosen on request
- Rollers: high-load moulded bearings
- Tracks: marine-grade aluminium
- Frame size: W34.5*50mm
- Top track size: W60*53mm
- Gaskets: silicone or foam filling
- Operation: manual

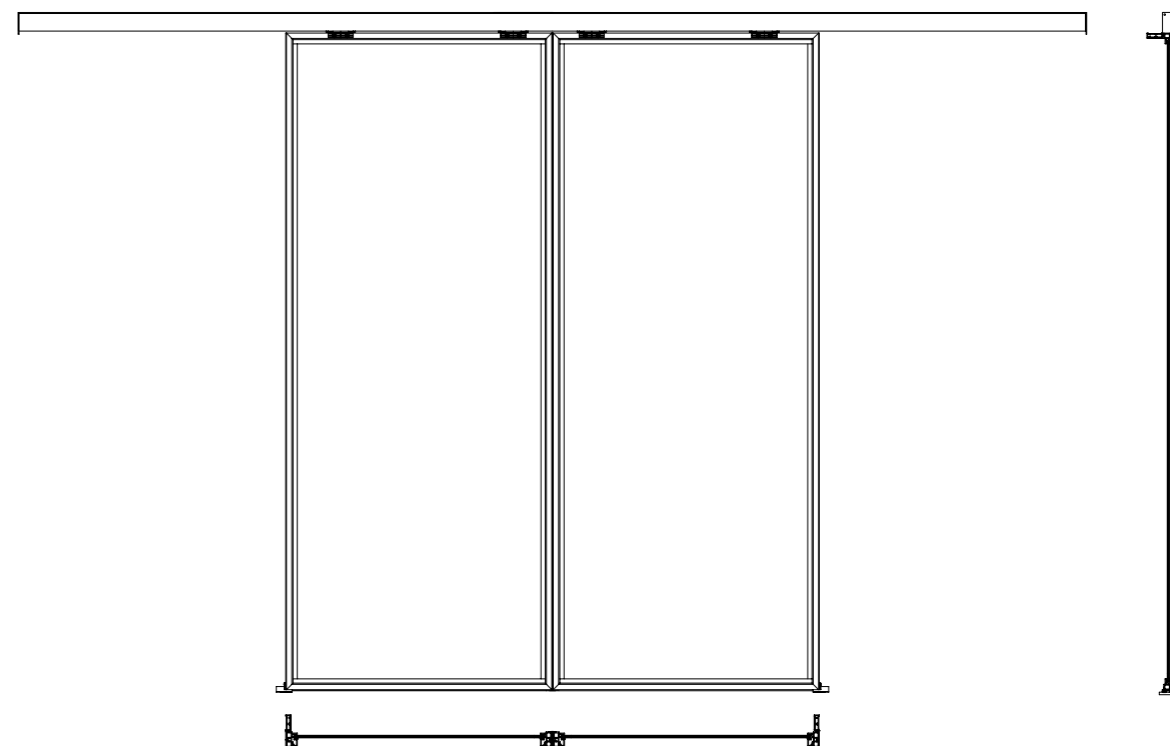
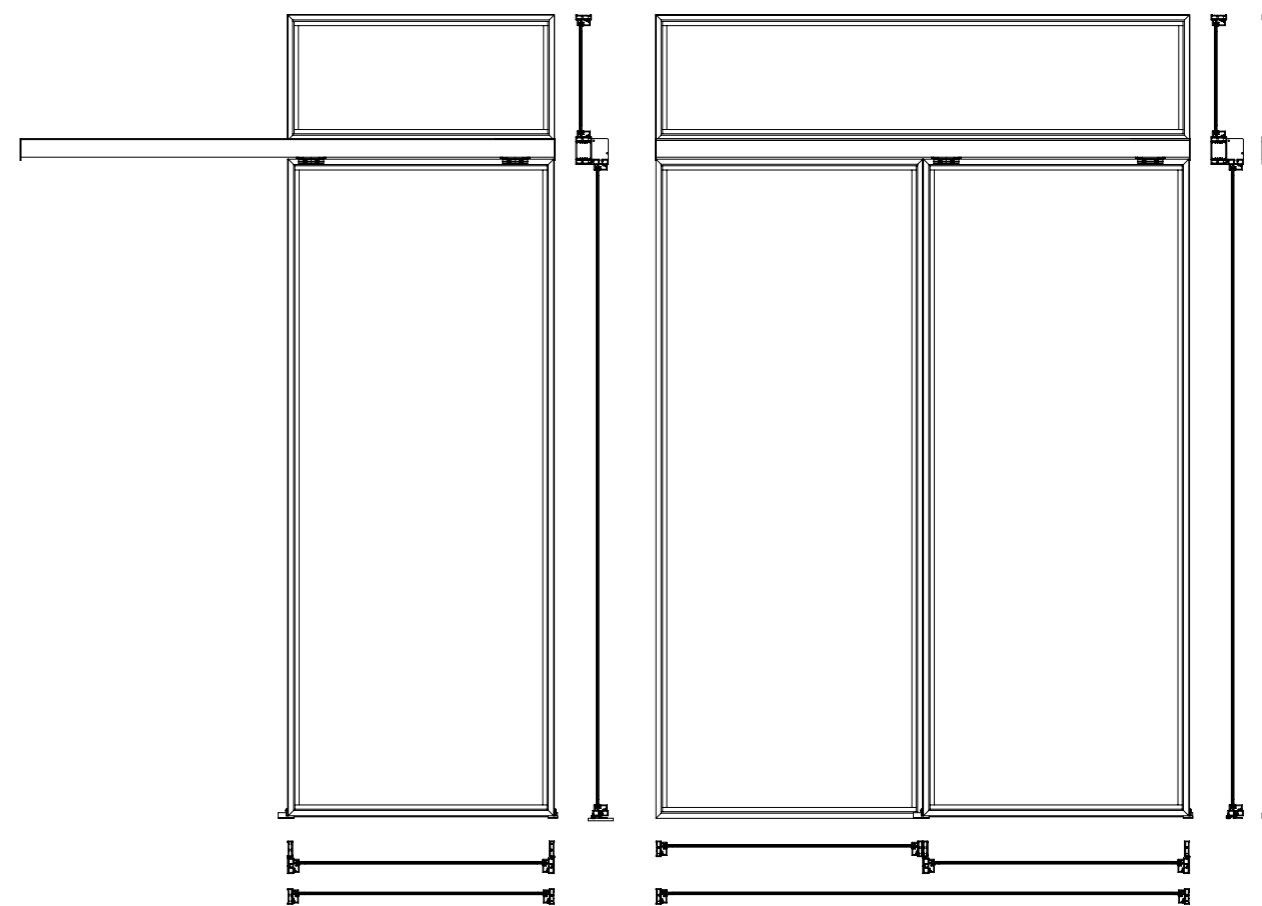
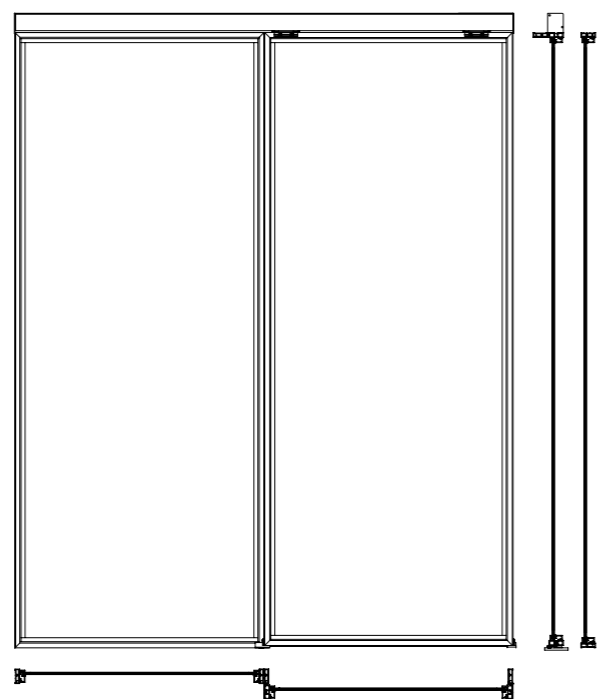
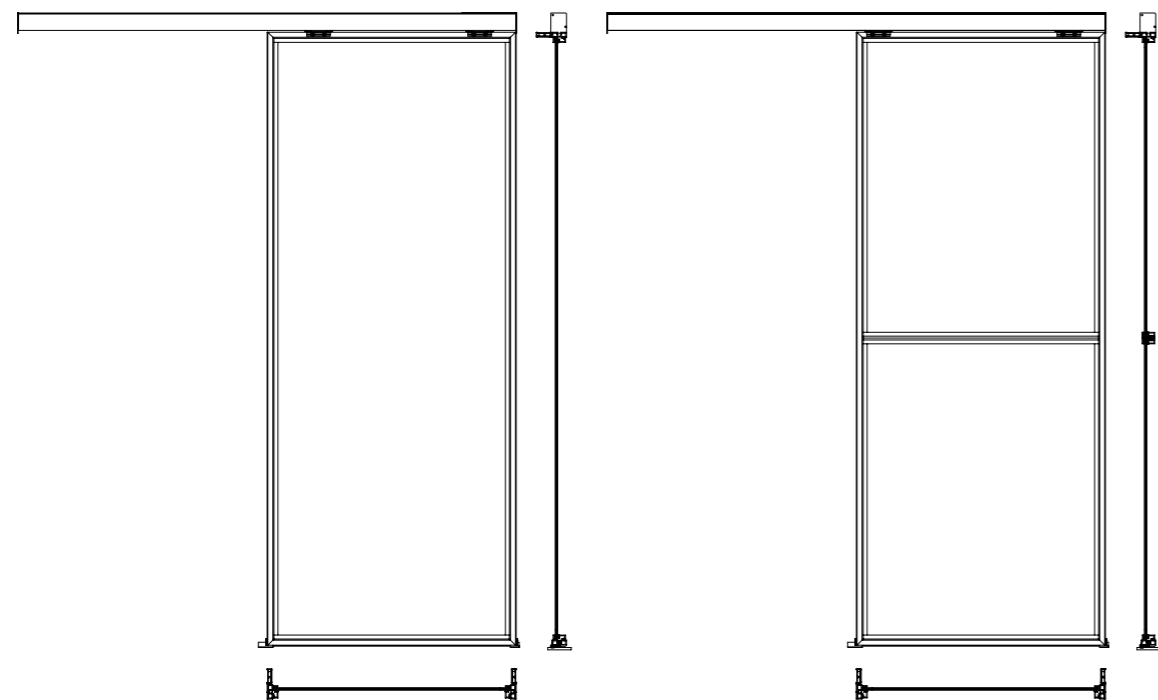






Modulus 50

Sliding door variations



Modulus 50

Folding door



Environmentally friendly



Designed for interiors



Folding door & frame system



Max. leaf weight:
100 kg



Fast assembly,
click-connect



Weldable
aluminium



Max. sound reduction
Rw: 20-30dB





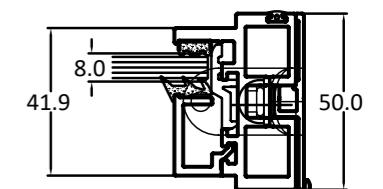
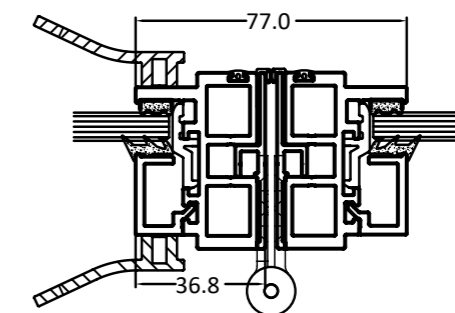
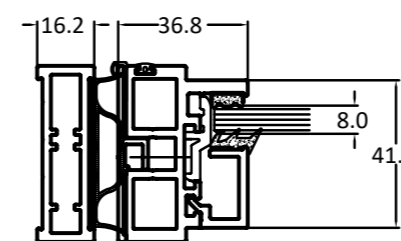
The Moduluz 50 glazed folding door system was developed by combining our pivot and sliding mechanisms. Its main advantage is its construction from extremely narrow, 35 mm profiles, which still allow for the creation of glass structures up to 3 meters in height. The bottom rail is fully recessed into the floor's top layer, and all components are made from corrosion-resistant materials, making the system ideal for wet environments.

The standard version does not include silencer gaskets, but the system can be supplemented with silicone gaskets and profiles. These provide 20–30 dB of noise reduction and 90% resistance to dust and odors, preventing the ingress of unpleasant smells.

The ultra-narrow profile design allows for seamless integration into existing metal frame or partition systems with minimal installation requirements. The track can be surface-mounted on the wall or concealed within the ceiling.

When combined with a glazed partition system, these folding doors can be manufactured in minimalist, industrial, or contemporary styles, making them suitable for both classic and modern homes and offices.

- Glass: single glazed or DGU acoustic
- Lock: optional on request
- Hinges: heavy duty ball bearing hinges
- Rail: marine grade aluminium
- Frame size: W34.5*50mm
- Top guide rail size: W40*43mm
- Gaskets: silicone or foam fill
- Operation: manual







Modulus 50

Pivot door



Environmentally friendly



Designed for interiors



Pivot door & frame system



Max. leaf weight: 180 kg



2D adjustable hinges



Fast assembly, click-connect



Weldable aluminium



Max. sound reduction
Rw: 25-30dB





We have developed our Modulusz 50 Pivot Door with an innovative, hidden mechanism. Its main advantage is that the leaf profile remains all around at 35 mm thickness, and with the integrated opening actuator the door can stop at different angles.

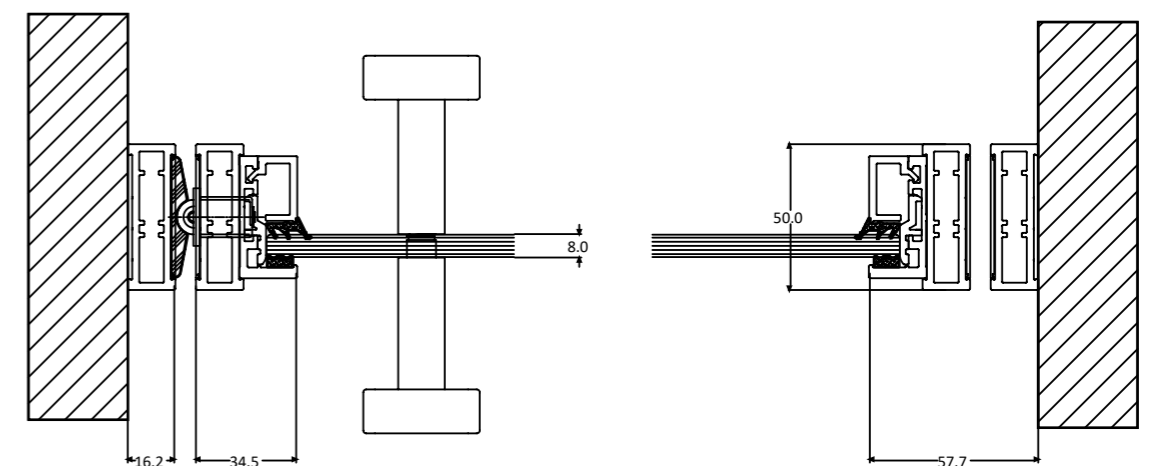
If you would like to complement your interior spaces with doors and windows that differ from the traditional ones, a pivot door can be an impressive visual element of your home or office.

The XS-ALU Pivot hardware and door system is our development, as well as the push-pull handles with wooden inserts, but we can meet our customer's unique needs on a project-specific basis as well. Our hardware allows positioning at 90, 0 and -90 degrees.

The pivot system is available as single-wing, double-wing or multi-wing revolving doors. Due to the high-precision needle roller bearings, their operation is very smooth, even in larger sizes than conventional hinged doors. Since we care about nature, we use for the system's production 50% recycled aluminium.

Like our Modulusz 50 system, we also strive for high sound insulation with the Pivot, which is why it is available as a sound-proofing version, with a sound insulation between 25 dB and 30 dB.

- Glass: single glazing or DGU acoustic
- Lock: roller-catch lock, mortice lock on special request
- Pivot hardware: adjustable 2D
- Framing: weldable or click-connect
- Frame size: 34.5 x 50mm
- Frame + wing size: 16 x 50mm + 34.5 x 50mm
- Door leaf size with roller lock: 34.5 x 50mm
- Double wing size: 75 x 50mm
- Seals: silicone and rubber
- Operation: manual

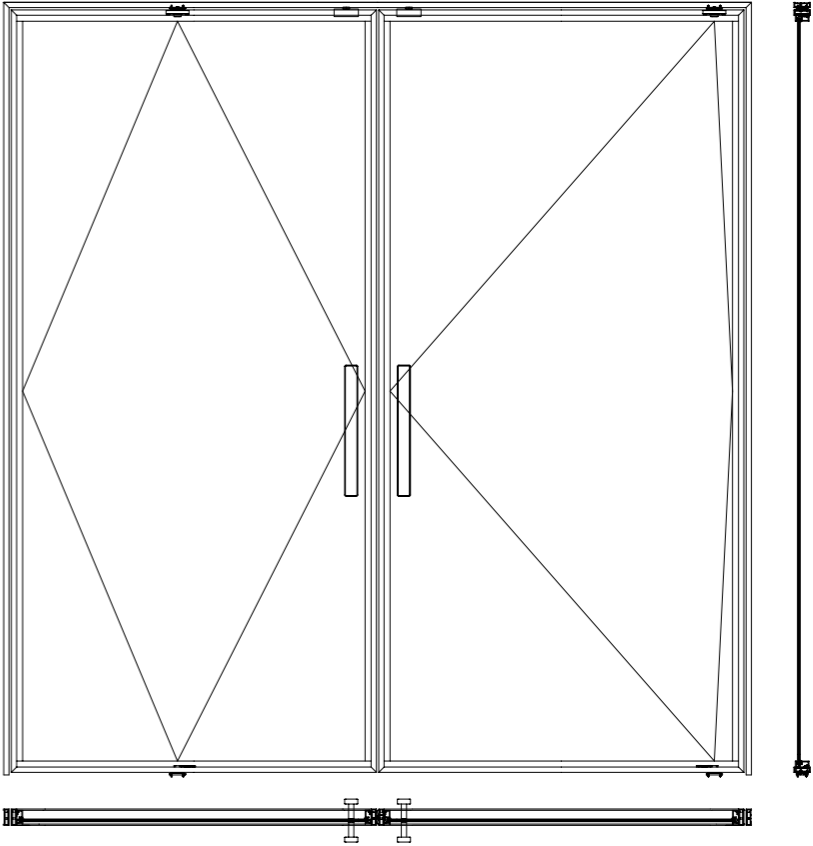
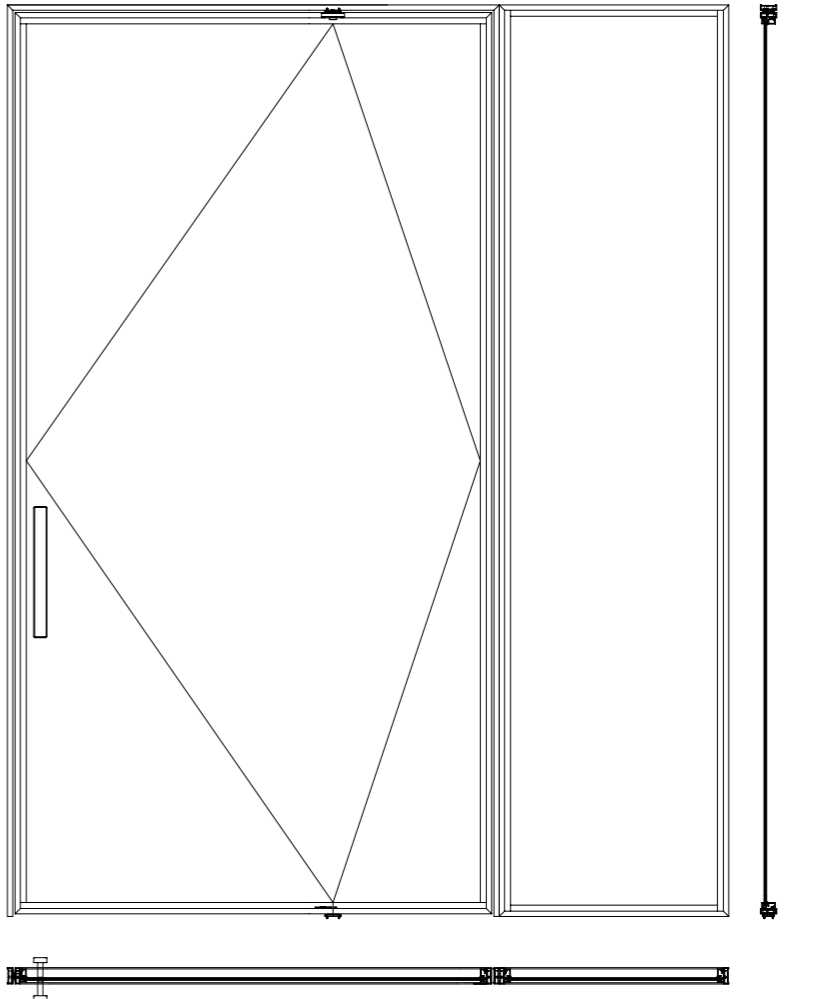






Modulus 50

Pivot door variations



Pocket 40

Pocket door



Environmentally friendly



Designed for interiors



Pocket sliding door system



Max. leaf weight: 120 kg



Fast assembly, click-connect



Weldable aluminium



Max. sound reduction
Rw: 20-35dB

New!
Launching in 2026, stay tuned!



The Pocket 40 glazed sliding door system is designed to fit with universal pocket wall systems. Developed and produced by XS-ALU Building Systems, this simple frame system is made of marine-grade aluminium and is assembled with reinforced corner connectors for extra-large sizes.

Equipped with hybrid gaskets all around, it effectively reduces sound levels by approximately 20-35 dB while keeping out dust and odors from adjacent rooms.

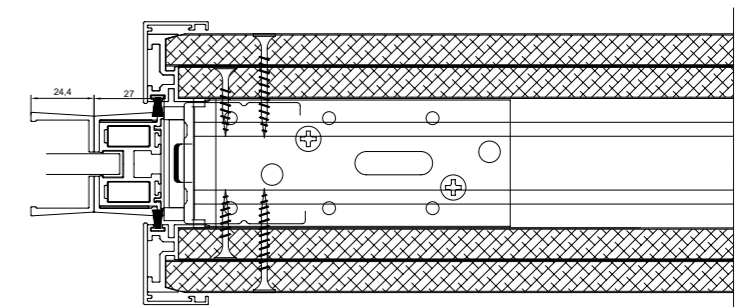
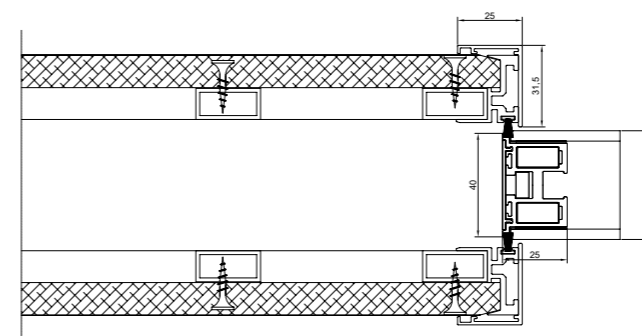
The innovative profile system, featuring extra narrow 25 mm profiles and a sleek design, allows for installation into almost any existing pocket frame. This opens up new applications where enhanced design or superior performance is required.

The doors offer two elegant glazing options to suit any aesthetic.

Flush glazing: the glass can be installed flush with the frame surface using 4 mm ceramic print ESG glass on both sides for a seamless, modern look.

Centered glazing: the glass can be set into the profile for a classic appearance, accommodating 6 mm to 8 mm ESG.

- Glass: Single glazed or laminated
- Frame Size: W30 x H44 mm
- Gaskets: Hybrid type
- Operation: Manual / Automatic
- Lock: Available on request with lockbox
- Rollers: Available on request with track
- Soft-Close: Available on request
- Pocket box: Available on request



Secreto 62

Flush Door



Environmentally friendly



Designed for interiors



Concealed hinge & frame system



Max. leaf weight: 120 kg



Fast assembly, click-connect



Flush bonded panel (multiply material options)



Max. sound reduction
Rw: 30-40dB

New!
Launching in 2026, stay tuned!





Secreto is a concealed, flush-closing, easy-to-install aluminium door system that perfectly combines timeless quality with a stylish, modern design – even for doors that reach up to the ceiling.

The entire door frame and sash structure is made of aluminium, the water resistance is excellent. It can be used in rooms with high humidity, even in wellness areas. Installing it in cold, damp environments is no problem.

The aluminium structure of the door can be covered with the same cladding as the wall, and the two sides of the door can have different finishes. This allows a combination of wood, stone, ceramic, glass or even leather, depending on the function of the rooms.

The Secreto 62 Light door system can support loads of up to 120 kg, so many materials can be used. If very heavy stones are required, the Secreto Heavy door system is recommended.

Excellent sound insulation is ensured by precision 3D-adjustable hinges and silicone gaskets, harmoniously combining functionality and aesthetics.

Made from 50% recycled aluminium, it is an environmentally responsible choice. The door profile is compatible with 3-18 mm thick external cladding and provides sound insulation of up to 40 dB using high-density materials. The system allows for the design of soundproof doors even without a handle, and can be fitted with concealed door closers, magnetic locks or special concealed locking solutions.

We highly recommend it for apartments with high ceilings and modern villas, where a discreet appearance, premium materials, and outstanding sound insulation are all required.

Covering: Aluminium, MDF, HDF, ceramic, or leather

Lock: roller shutter lock, magnetic lock, panic lock

Hinges: hidden type, 3D adjustable, CNC-cast

Framing: click connect and screw

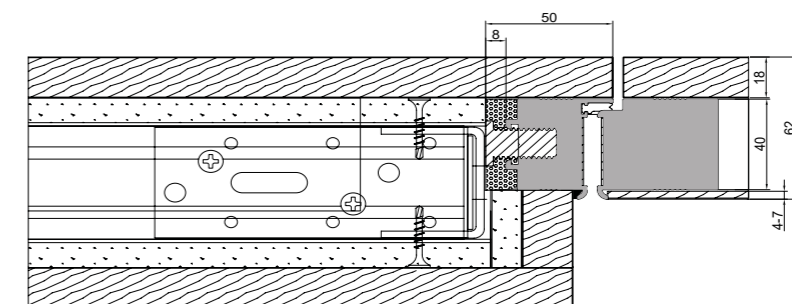
Frame size: w42*44mm

Frame + door leaf size: W84*44mm

Door leaf size: W48*44mm

Gaskets: silicone

Operation: manual, hidden door closer







Porta Vinarisz

Floor-mounted door



Designed for cellars



Designed for interiors



Colour glass or frame



Max. leaf weight:
110 kg



3D adjustable hinges



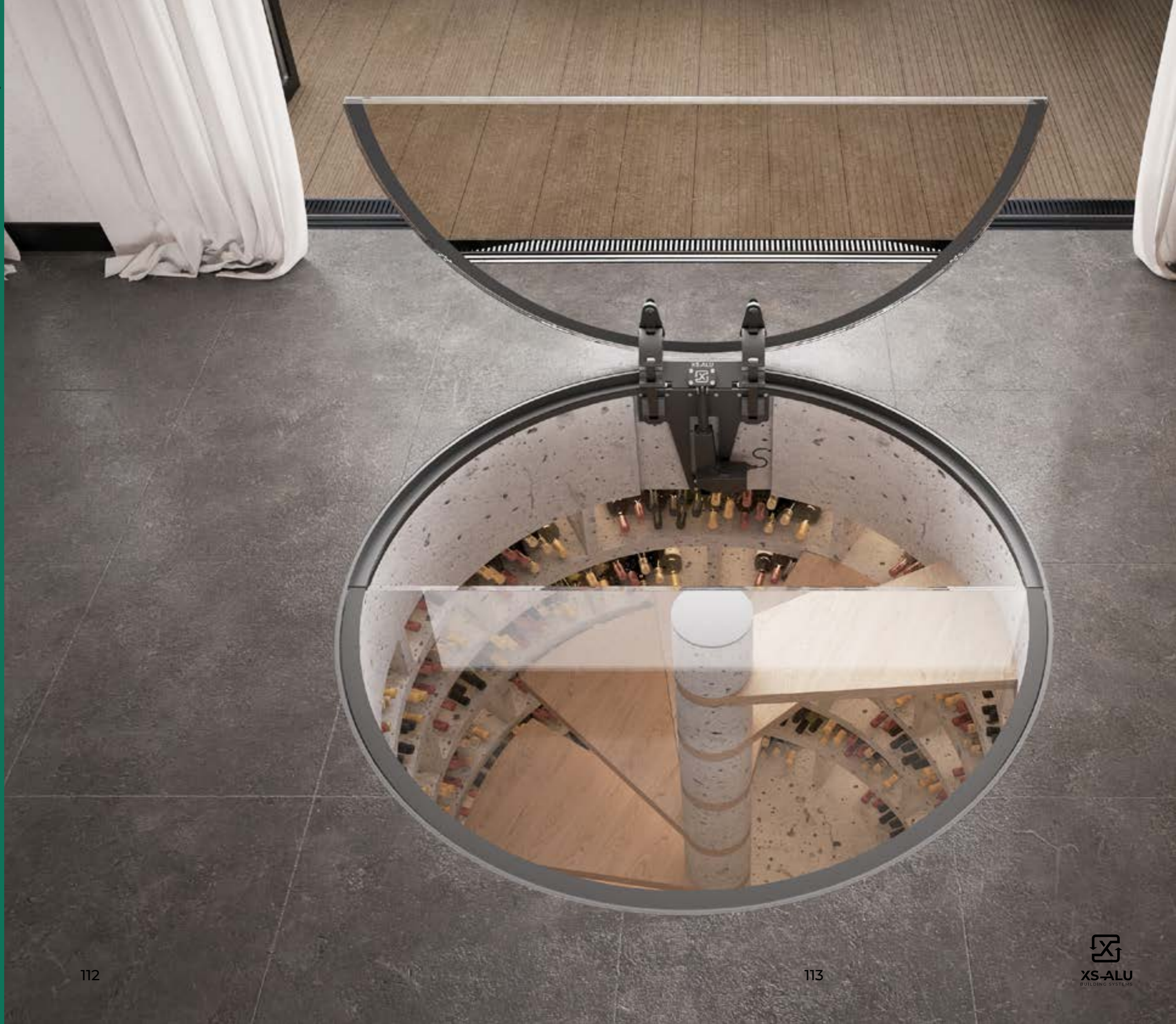
Laminated safety glazing



Welded steel frame



Max. sound reduction
Rw: 15-35dB





Porta Vinarisz is an exclusive floor-mounted door system that is the perfect choice for wine cellars and luxury establishments. It is made of high-quality materials, combined with innovative technology and elegant design to offer both functionality and aesthetics at a high level.

Its main feature is its transparent laminated and tempered floor glass, more than 30 mm thick, which provides maximum safety and durability while giving a modern look. The glass can support loads of up to 300 kg/m² without a centre support.

Professional, automatic opening that can be controlled by remote control, 8000N force mechanism easily lifts step-resistant glass panels over 100 kg. The 7-axis multi-pivot mechanism (ejector hinge) used on yachts guarantees smooth movement and long service life.

Circular design that can be opened up to 60% to provide unobstructed access to basements or circular staircases. The durable steel frame adds stability and modern lines to the space.

Areas of application:

- Luxury homes, wine cellars, design cellars
- Public cultural or exhibition spaces
- Individual architectural projects

Porta Vinarisz is not just a door – it is a harmony of technology and design.

Glass: single glazed laminated tempered glass

Load capacity: 300 kg/m²

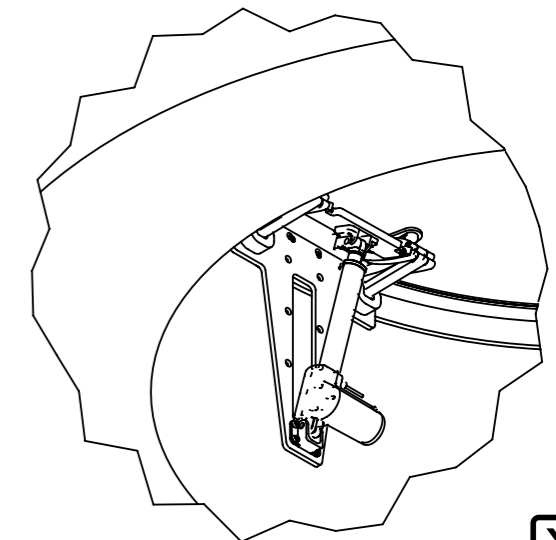
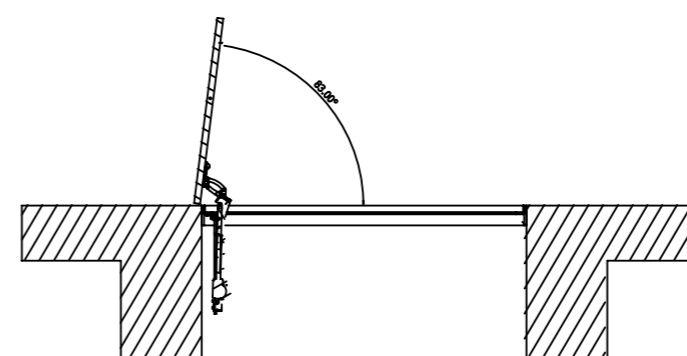
Gaskets: silicone or neoprene rubber

Operation: automatic

Automatic: 8000N lifting force, with remote control

Opening angle: max. 85 degrees

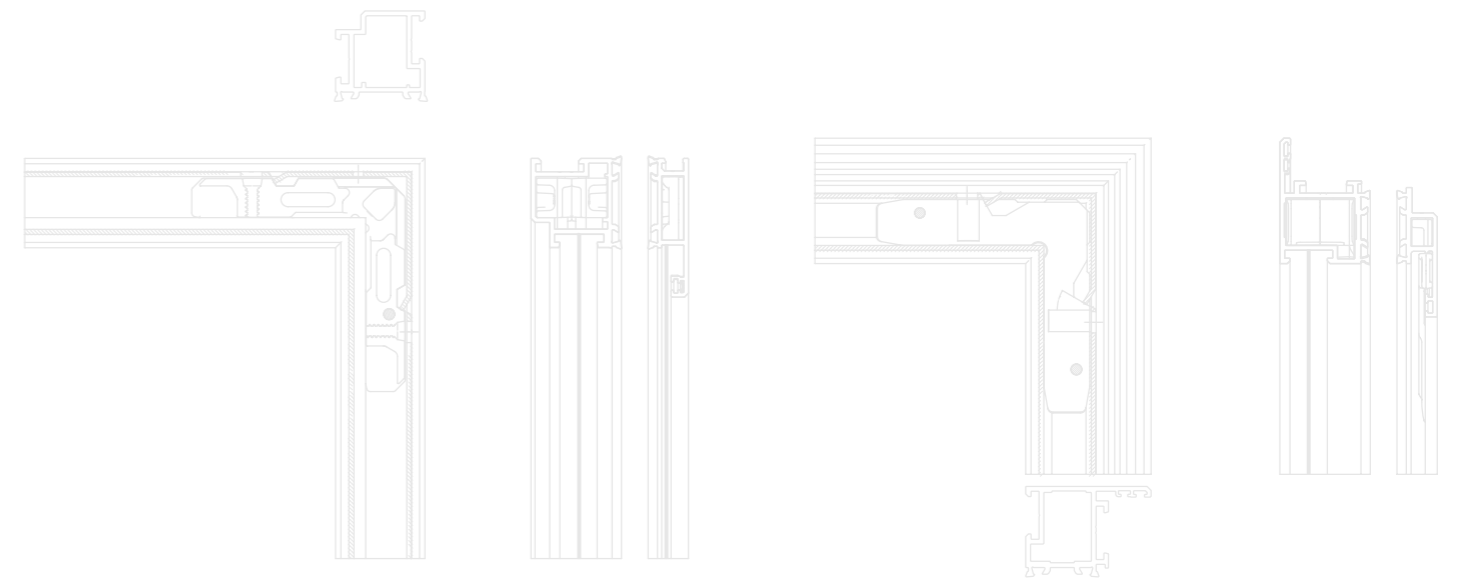
Opening percentage: max. 60%







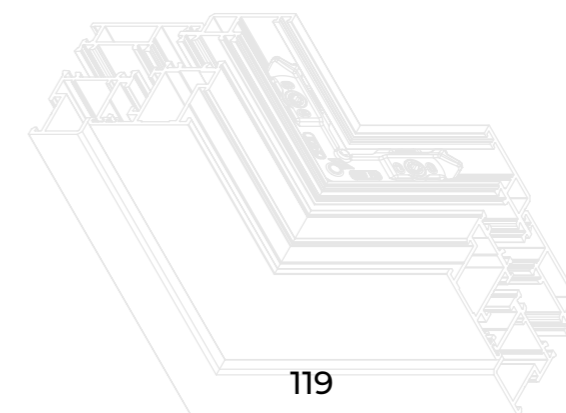
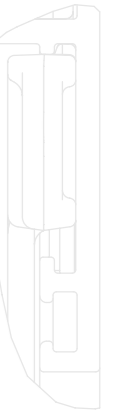
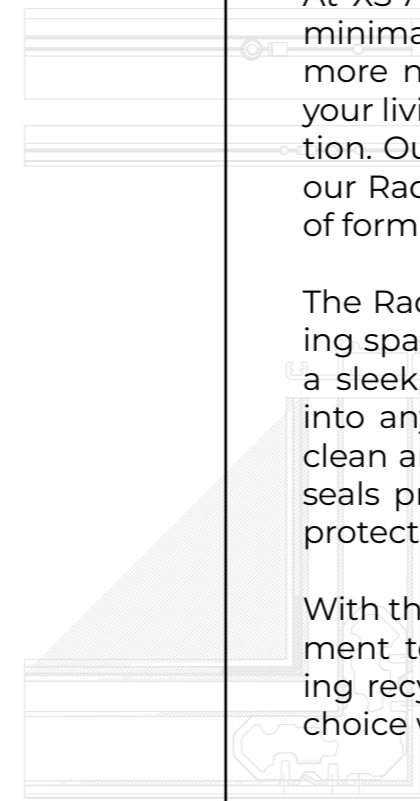
RADIKAL 74



At XS-ALU, our vision is clear: we believe in crafting minimalistic windows and doors that not only invite more natural light into your rooms but also elevate your living spaces with their simplicity and sophistication. Our commitment to this vision is epitomized by our Radikal system, a testament to the perfect union of form and function.

The Radikal system is designed to transform your living spaces seamlessly. Its double flush design creates a sleek, unobtrusive look that effortlessly integrates into any architectural style. Hidden hinges ensure a clean and clutter-free aesthetic, while silicone gasket seals provide optimal sound insulation and weather protection.

With the Radikal system we take pride in our commitment to sustainability. Our products are crafted using recycled materials, making them an eco-friendly choice without compromising on quality or style.



Radikal 74 Window system



Environmentally friendly



Designed for exteriors



Tilt & turn window and frame system



Max. leaf weight: 180 kg



3D adjustable hidden hinges



Fast assembly, click-connect



Weldable aluminium



Max. sound reduction
Rw: 40-48dB





Radikal 74 is our design exterior window system. The flush closing design and hidden hardware create a unique and decorative look.

Thanks to our innovative development, the window frame and the leaf are in a level plane both inside and outside. Its appearance is narrow and exclusive.

In addition, it has unique features such as triple continuous sealing, barrier-free low threshold, hidden yet heavy-duty stainless steel hardware, high thermal and acoustic insulation and up to 180-degree opening.

All our products are made from 50% recycled aluminium, making our doors and windows an environmentally conscious choice.

Construction types: fixed, tilt and turn, single or double leaf, parallel sliding

Glass: double or triple glazing

Hinges: stainless steel hidden hinges - 90/180 degree opening

Framing: crimped or click-connect corner joints

Frame size: W 49*74 mm

Frame + door leaf size: W 96*74 mm

Double door leaf size: W 119*74 mm

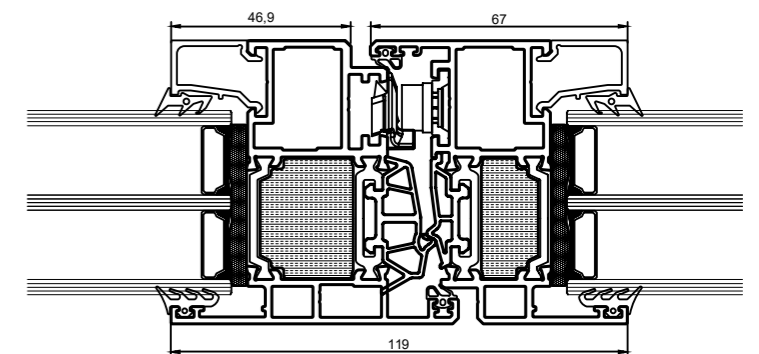
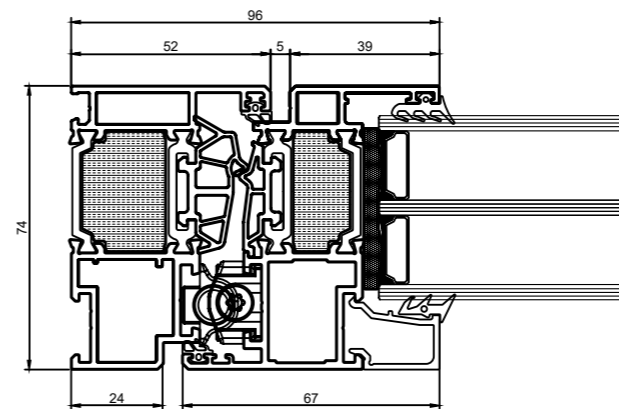
Max. window leaf weight with hidden hardware: 180 kg

Gaskets: silicone and rubber

Operation: manual or automatic

Sound insulation: approx. 40-48 dB

Thermal insulation: Uf 1,63 W/m2K



Radikal 74 Door system



Environmentally friendly



Designed for exteriors



Hinged door & frame system



Max. leaf weight: 180 kg



3D adjustable hidden hinges



Fast assembly, click-connect



Weldable aluminium



Max. sound reduction
Rw: 40-48dB





Radikal 74 is our design exterior door system. The flush closing design and hidden hardware create a unique and decorative look.

Thanks to our innovative development, the window frame and the leaf are in a level plane both inside and outside. Its appearance is narrow and exclusive.

In addition, it has unique features such as triple continuous sealing, barrier-free low threshold, hidden yet heavy-duty stainless steel hardware, high thermal and acoustic insulation and up to 180-degree opening.

All our products are made from 50% recycled aluminium, making our doors and windows an environmentally conscious choice.

Construction types: fixed, tilt and turn, single or double leaf, parallel sliding

Glass: double or triple glazing

Hinges: stainless steel hidden hinges - 90/180 degree opening

Framing: crimped or click-connect corner joints

Frame size: W 49*74 mm

Frame + door leaf size: W 96*74 mm

Double door leaf size: W 119*74 mm

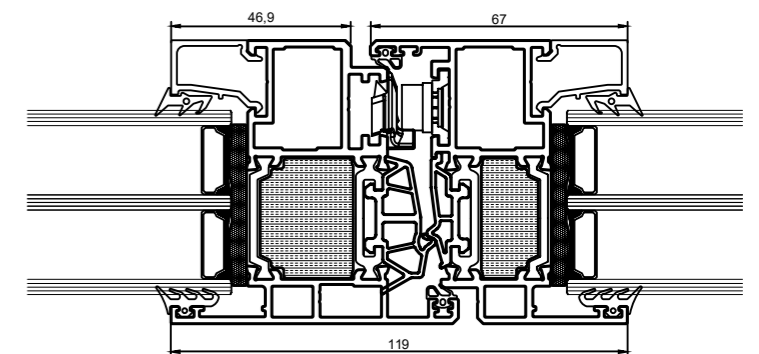
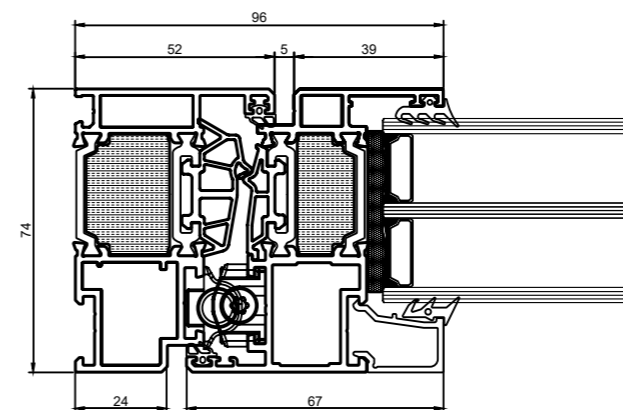
Max. door leaf weight: 180 kg

Gaskets: silicone and rubber

Operation: manual or automatic

Sound insulation: approx. 40-48 dB

Thermal insulation: Uf 1,63 W/m2K

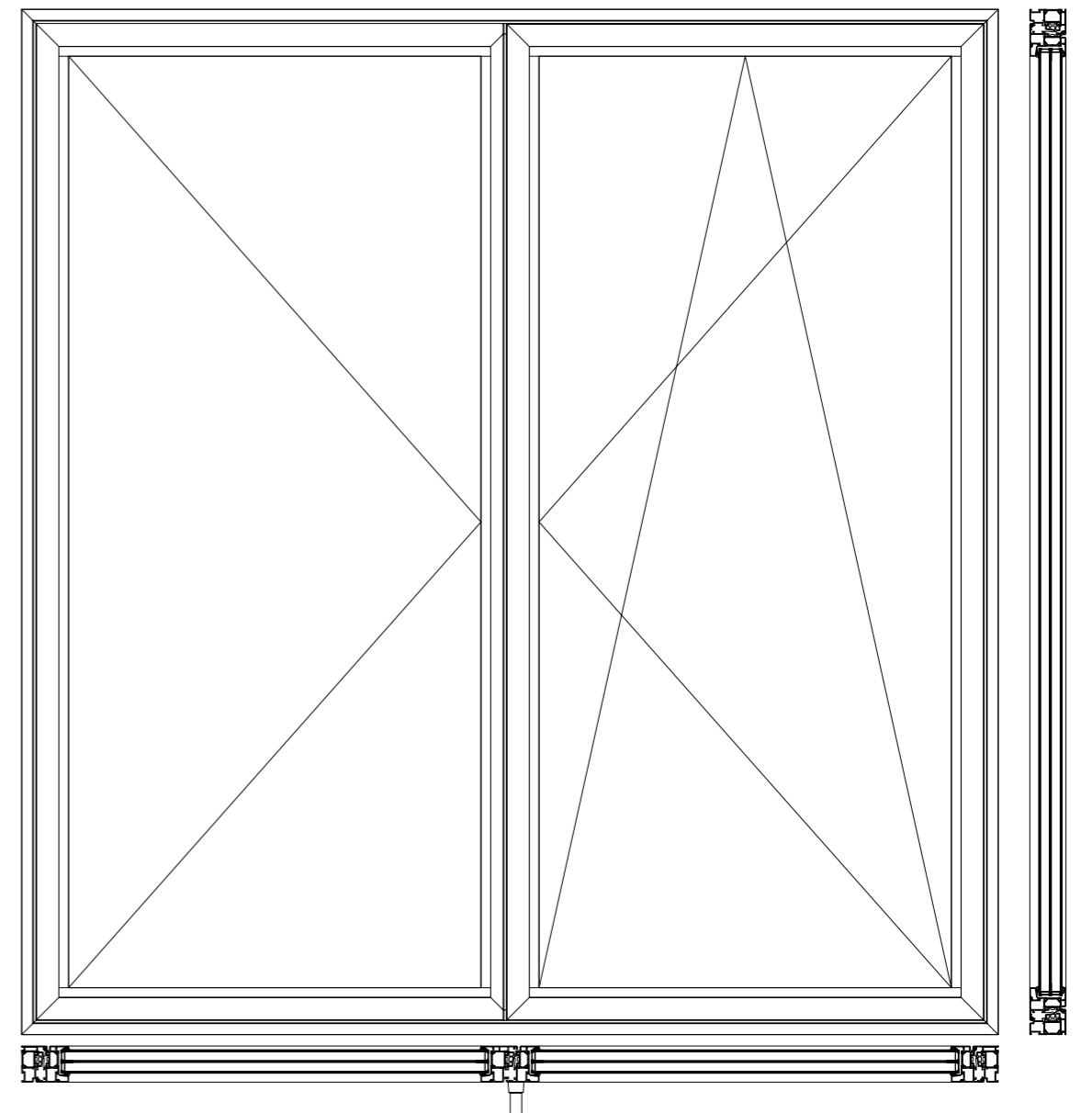
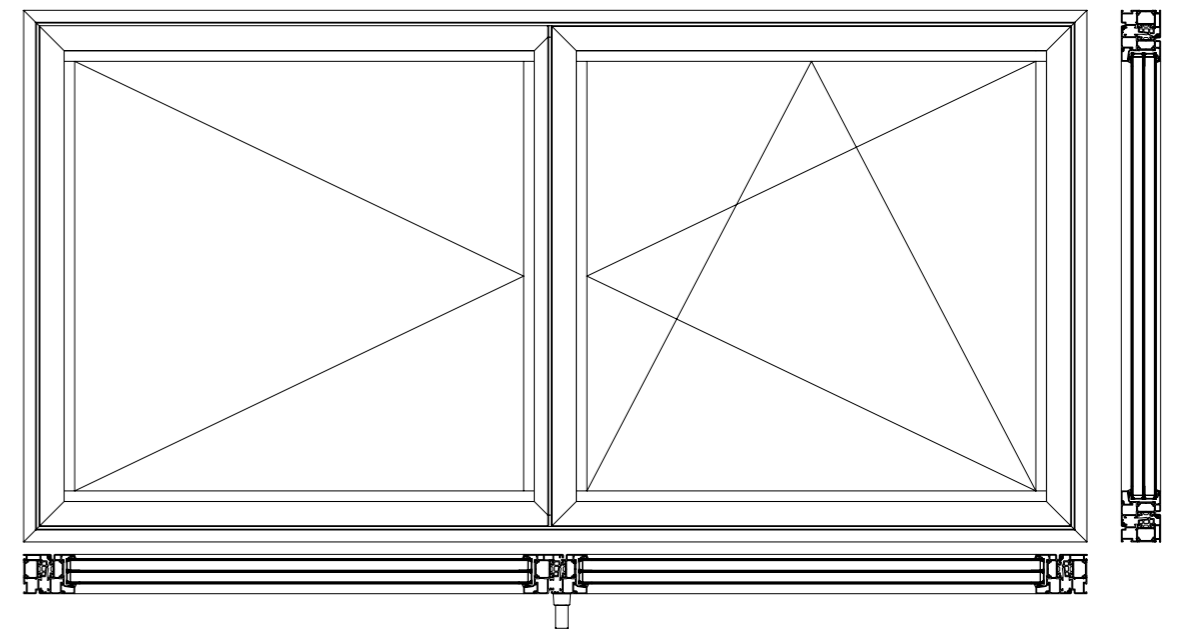
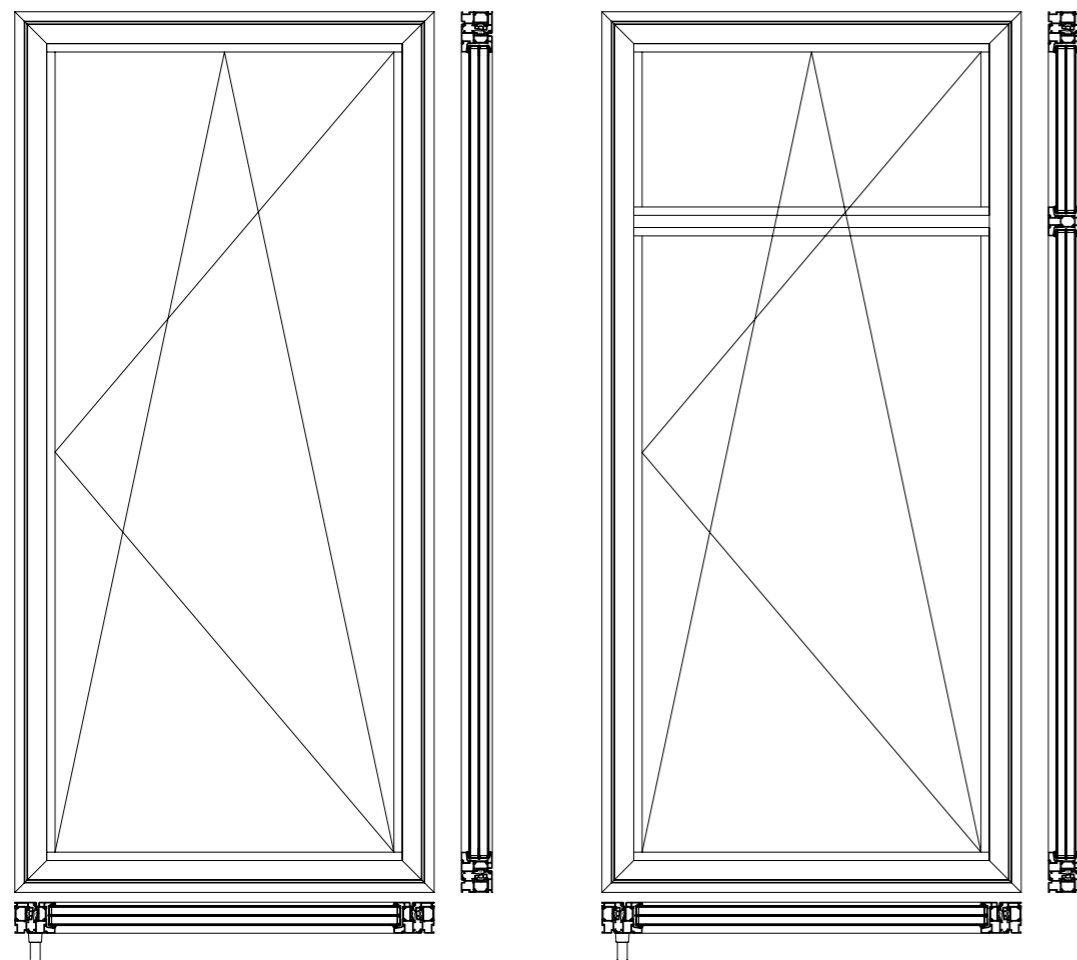
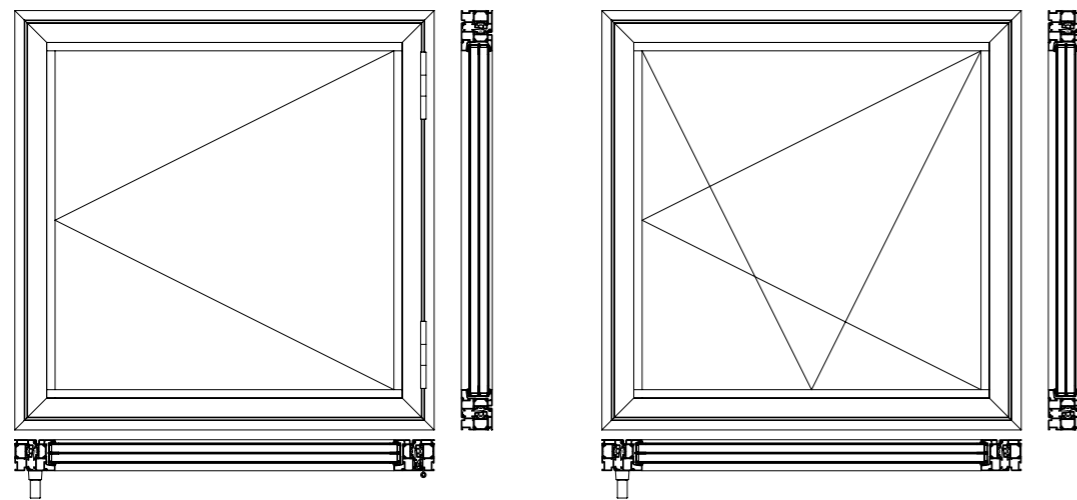


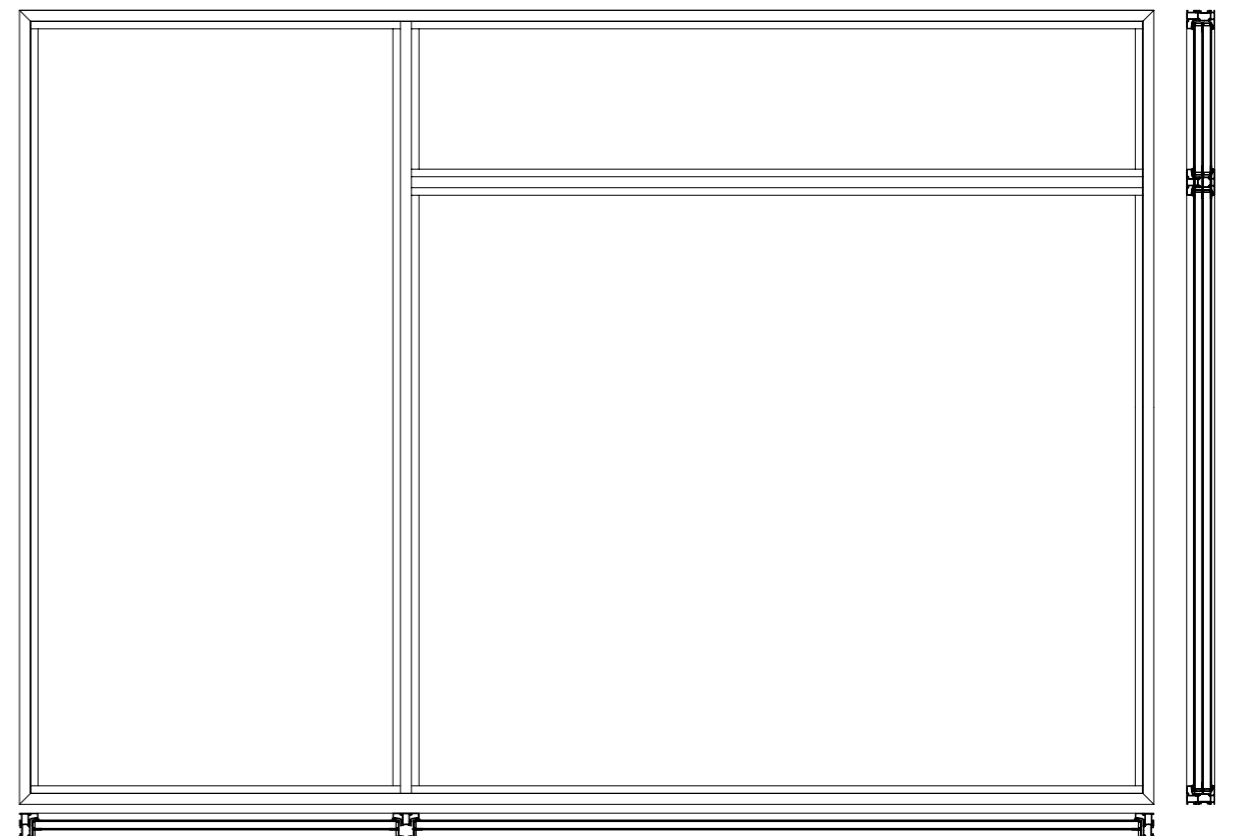
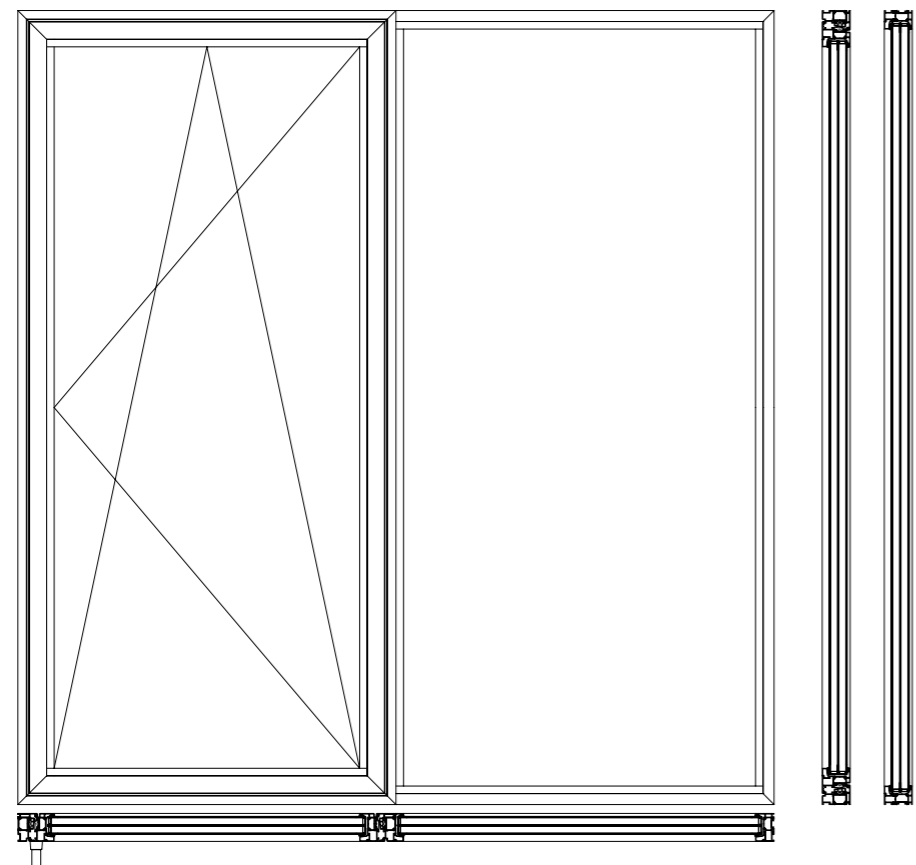
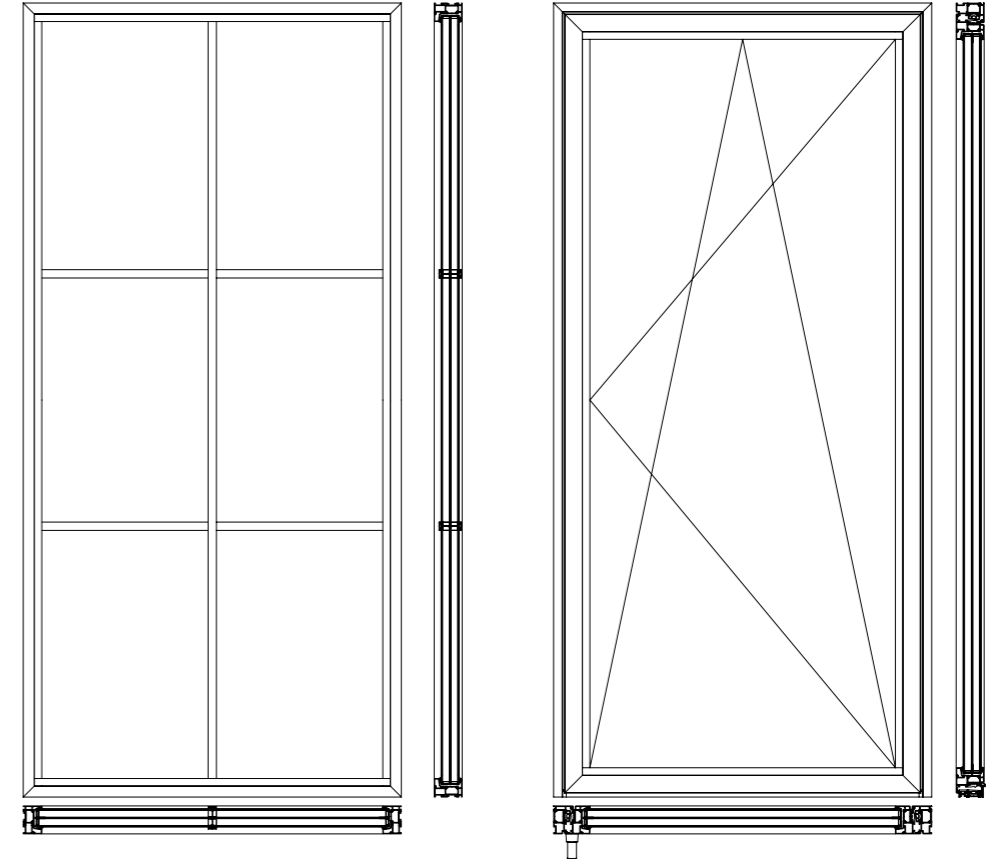
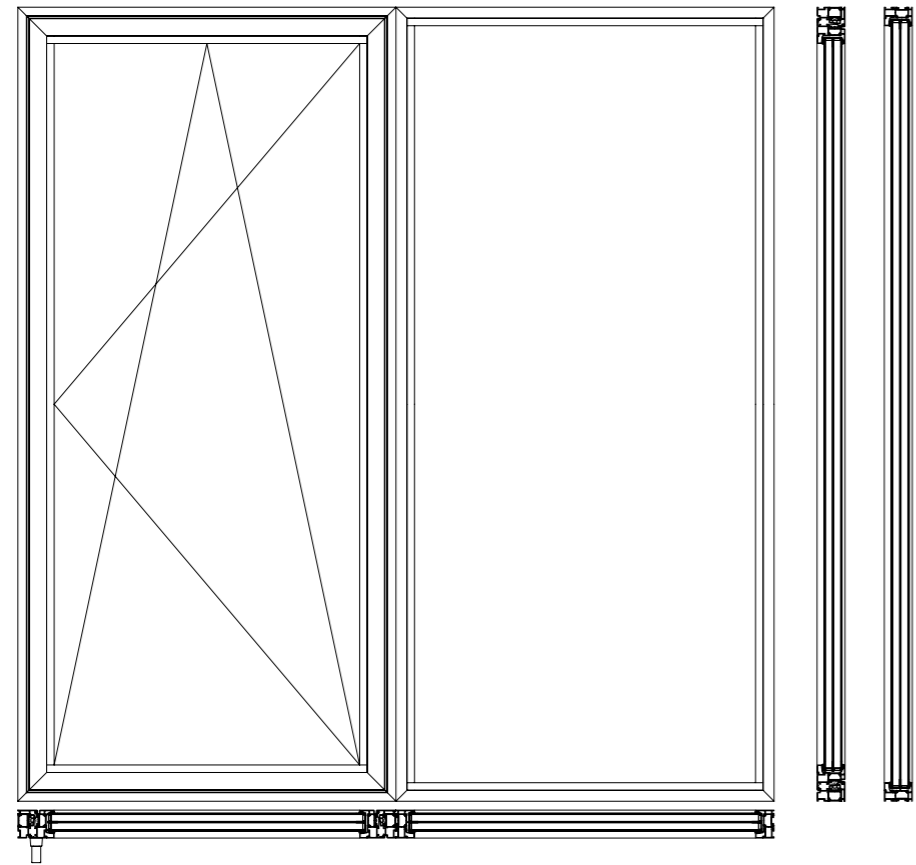




Radikal 74/81

Window and door variations





Radikal 170

Sliding door



Environmentally friendly



Designed for exteriors



Sliding door & frame system



Max. door leaf weight: 1000 kg



Marine grade alloy



Fast assembly, click-connect



Weldable aluminium



Max. sound reduction
Rw: 45-49dB

New!
Launching in 2026, stay tuned!





Radikal 170 – our newest minimalist sliding exterior door system – redefines modern design with invisible elegance. The frame nearly disappears, leaving nothing but uninterrupted views.

Featuring a 38mm visible ultra-narrow aluminium frame, the system maximises visibility while supporting glass panels weighing up to 1000 kg. Its minimalist profile accentuates the harmony of natural colours, seamlessly blending into contemporary architecture.

Engineered for extreme durability, Radikal 170 combines premium marine-grade aluminium alloy construction with stainless steel reinforcements, capable of withstanding industrial-grade loads. Size limitations are determined solely by the capabilities of triple-layer tempered safety glass, ensuring adaptability to virtually any space. A perfect fusion of strength and sophistication, Radikal 170 transforms openings into panoramic experiences – the ideal solution for modern living.

Design: sliding-fix, double sliding, triple sliding or more

Glazing: triple glazing

Rollers: stainless steel, hidden

Framing: click connect

Frame size: W170*50 mm, built-in

Visible leaf size: 37 mm

Frame + sash size: W170*87 mm

Centre leaf size: W153*38 mm

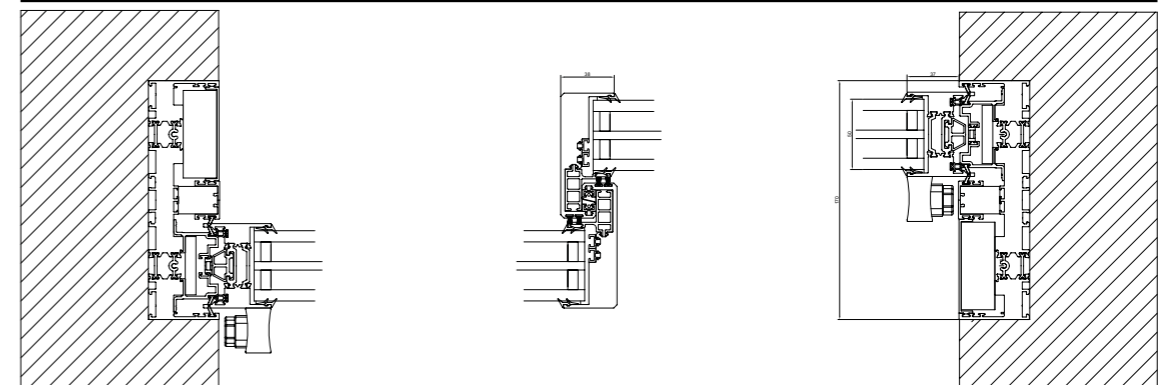
Maximum sash weight: 1000 Kg

Seals: brushes and rubber

Operation: manual or automatic

Sound insulation: approx. 48 dB (in testing)

Thermal insulation: Uf 1,63 W/m²K









Radikal Pivot

Entrance door system

New!
Launching in 2026, stay tuned!



Environmentally friendly



Designed for exteriors



Pivot door system



Max. door leaf weight:
500 kg



Marine grade alloy



Fast assembly,
click-connect



Weldable aluminium



Max. sound reduction
Rw: 35-45dB





The front door, which not only locks, but opens up space.

Let's dare to dream big! It is possible to create a monumental door up to 6 metres in height and up to 500 kg in weight, which is beyond anything we have ever imagined. This is not just a door. It's the face of the house, a work of art of undisputed prestige and taste that will be talked about for a long time to come.

Radikal is where power meets precision, because behind the striking beauty of every Radikal door lies a major innovation: our proprietary 3D adjustable hinge system and automatic seals. This technology ensures that even doors weighing up to 500 kg operate effortlessly, quietly and elegantly – even when fixed at different angles.

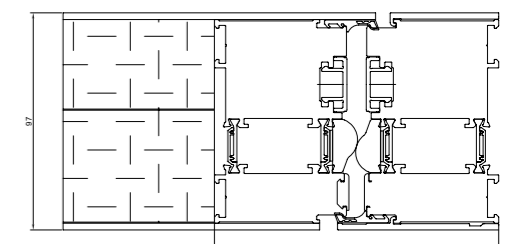
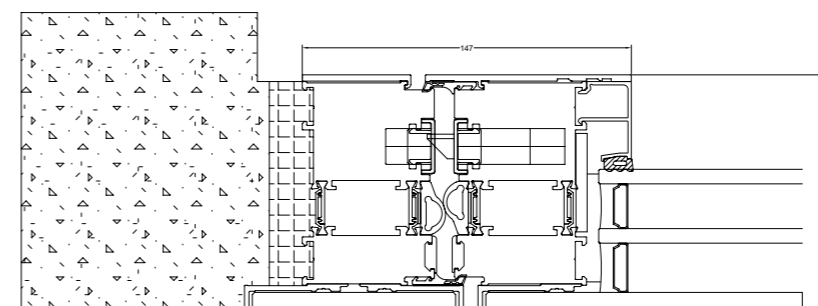
Choose the finish that suits your taste from anodised aluminium, natural stone, glossy or coloured glass, special ceramics, timeless stainless steel or warm wood veneer combined with copper.

The result? A completely unique, unparalleled entrance door.

All our products are made from 50% recycled aluminium, making our doors and windows an environmentally conscious choice.

The Radikal system is currently under development, but you can pre-order it now for 2026 projects! If you like minimalist, innovative design, are about to renovate or build and could imagine Radikal in your home, ask for our discounted offer.

- Glazing: 2 or 3 layers insulated glass
- Paneling: special panels, ceramic, stone, steel, etc.
- Hinges: stainless steel pivot hinges
- Framing: hinged or click connect
- Frame size: W127*91 mm
- Max. door leaf weight: 500 kg
- Gaskets: silicone and rubber
- Operation: manual with automatic locking
- Sound insulation: approx. 35-45 dB (in testing)
- Thermal insulation: Uf 1.63 W/m²K, Uw 0.8 W/m²K





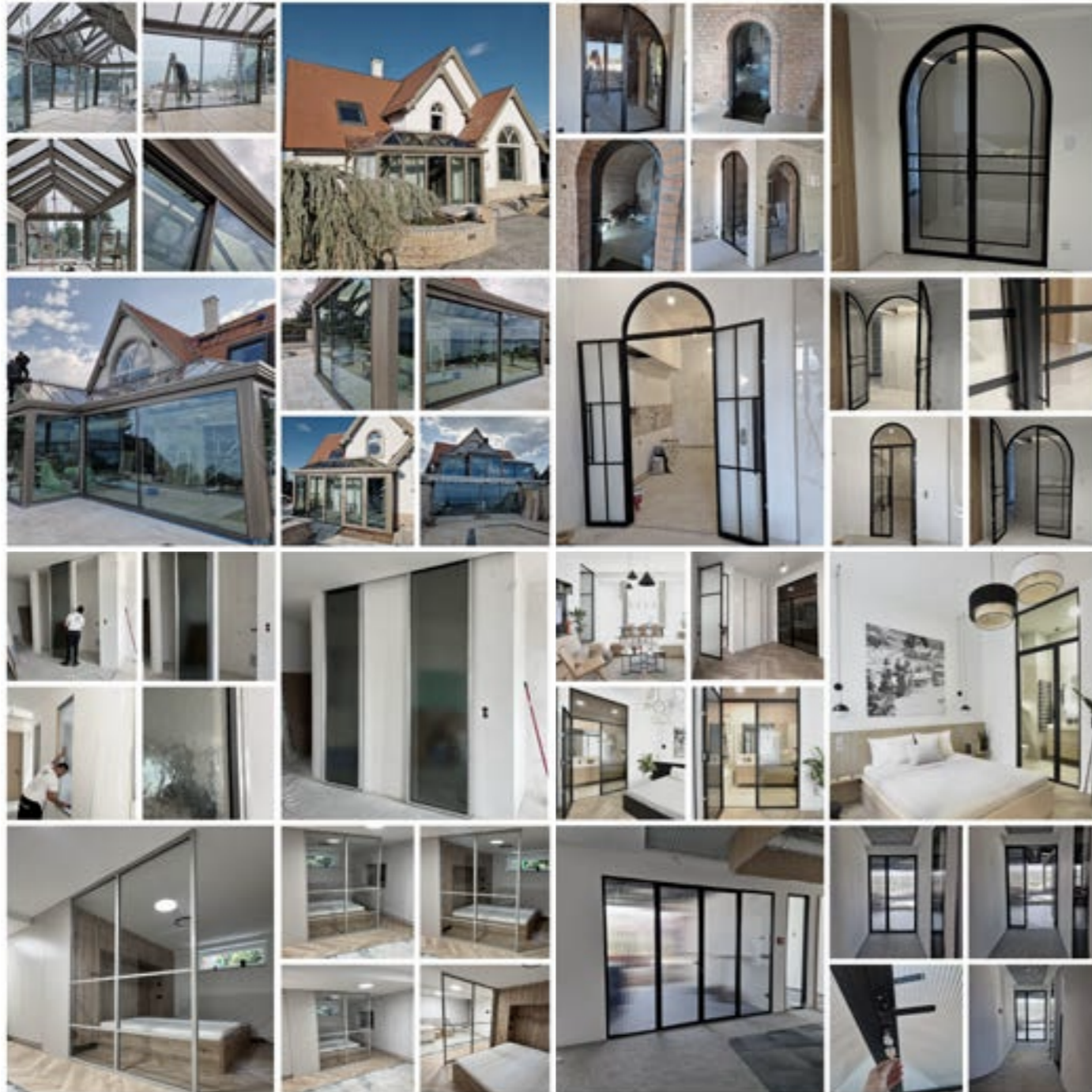
Radikal Pivot Door



Our references

Witness the exceptional performance of our narrow-profile aluminium glazed doors and partitions. This portfolio showcases real-world applications where cutting-edge innovation meets elegant design.

Go beyond the specifications and feel the difference! Discover how our solutions create stunning, acoustically optimized, and sustainable spaces. Be inspired for your next project.

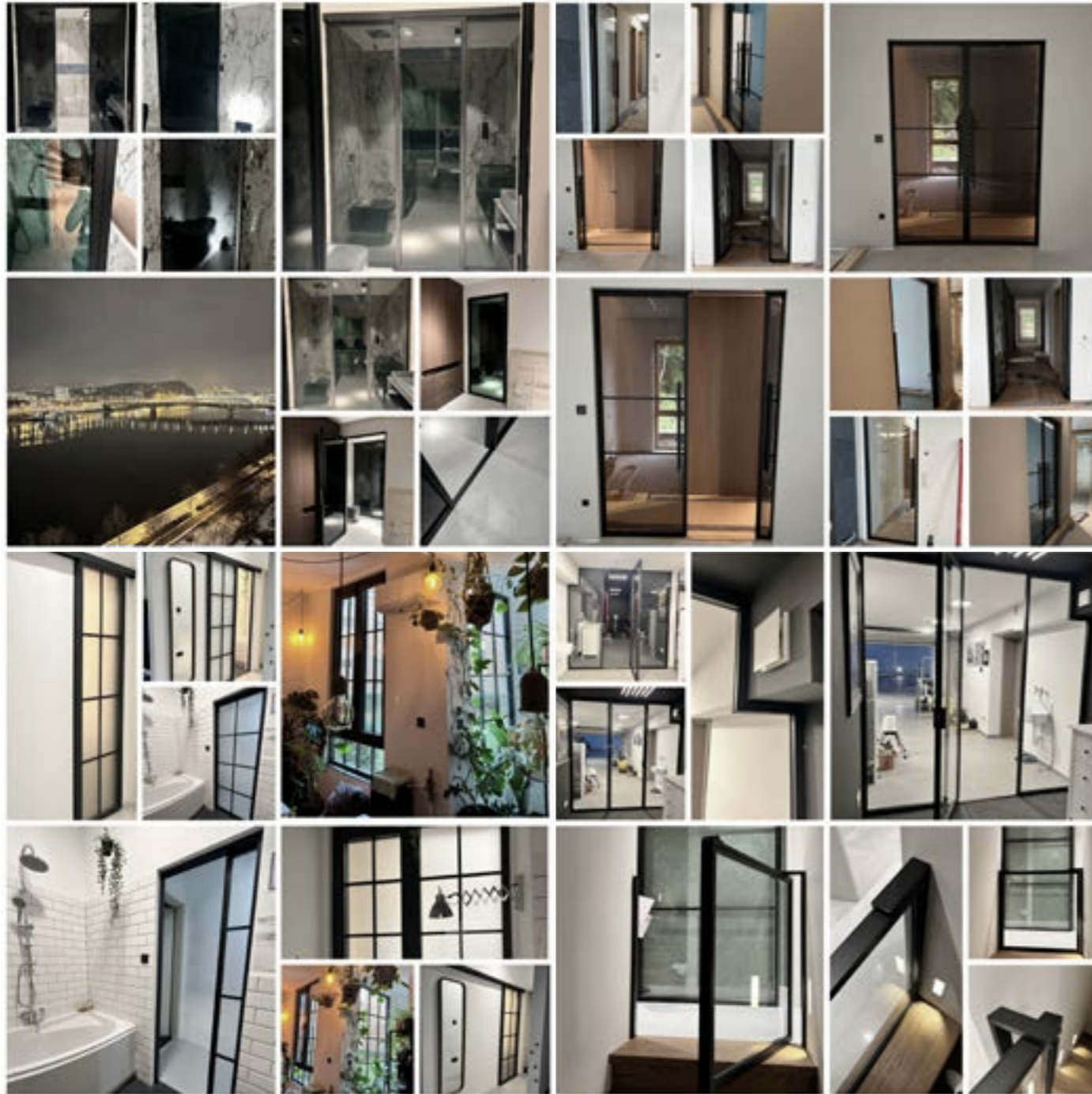




Our references

Witness the exceptional performance of our narrow-profile aluminium glazed doors and partitions. This portfolio showcases real-world applications where cutting-edge innovation meets elegant design.

Go beyond the specifications and feel the difference! Discover how our solutions create stunning, acoustically optimized, and sustainable spaces. Be inspired for your next project.





Modulus Fixed Glazing



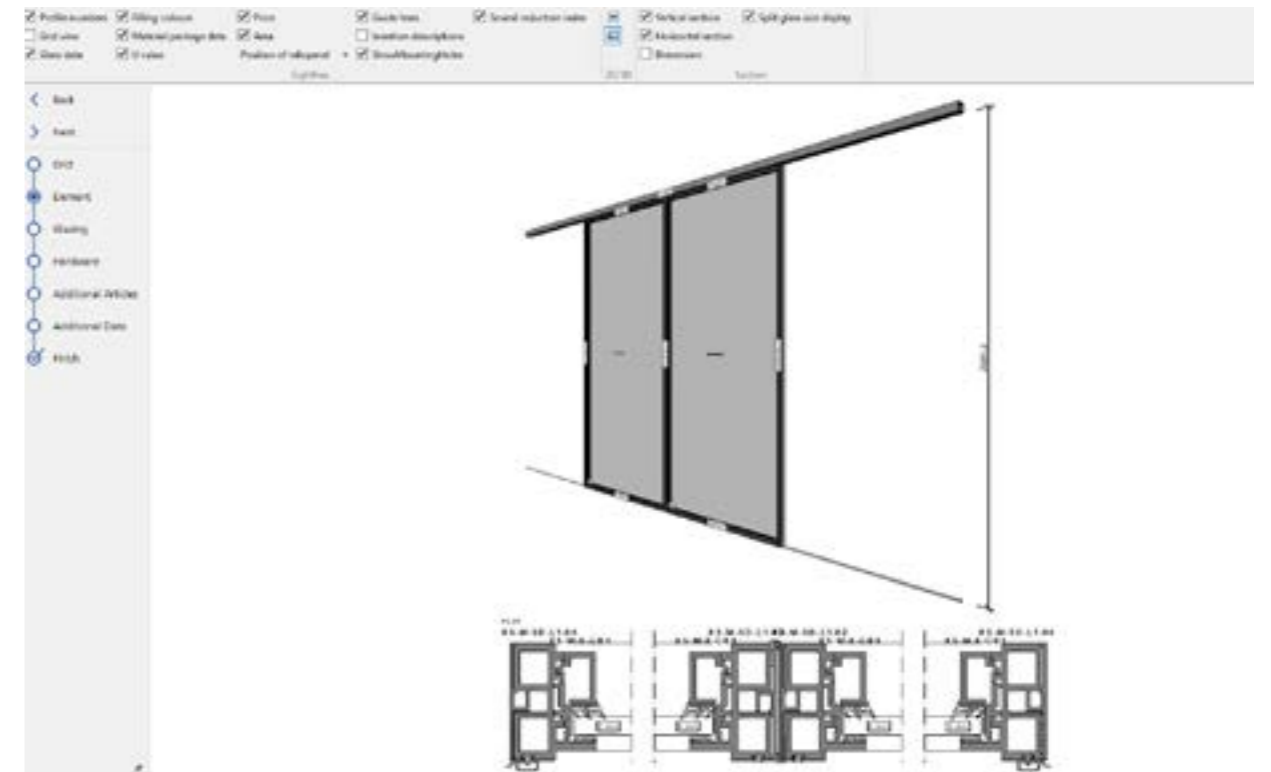
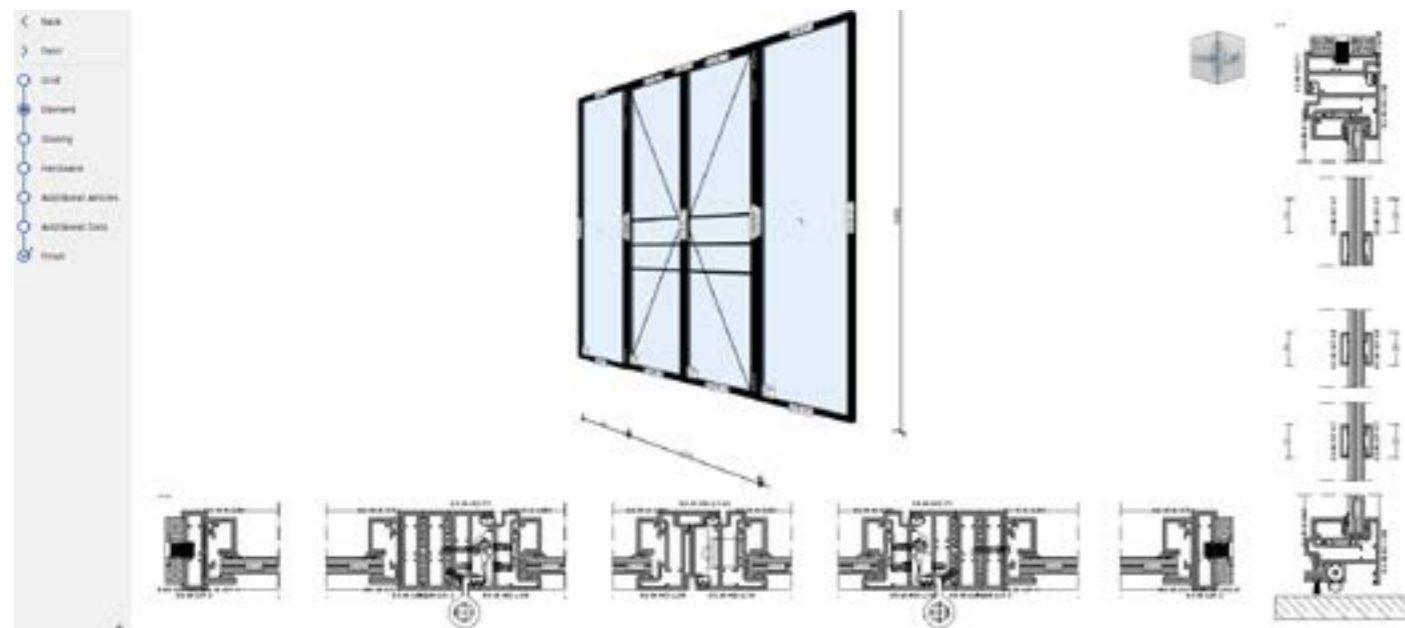
XS-ALU Building Systems products are available in Logikal software.

Unlock the power of Orgadata's software for seamless control over your projects. With Logikal, your operations will run smoothly, efficiently, and with unparalleled ease. Logikal serves as your steadfast guide, ensuring both you and your team navigate the entire project process reliably. Everyone on your team will always know what needs to be done, fostering clear communication and coordination.

Stay in the know with a comprehensive status update on planning, production, and processing available at your fingertips, whenever you need it. This clarity empowers your employees to tackle even the most complex projects with confidence, allowing you to rest easy.

Let's dive deeper into how Logikal revolutionizes your operations:

1. System Selection and Construction: Logikal allows you to create all elements reliably and effortlessly, with the added assurance of constant checks to ensure everything fits seamlessly.
2. Project Calculation: Accelerate your project pitches with Logikal, enabling you to respond faster and with greater flexibility, giving you the edge you need to win tenders.



3. Order Processing & Production Planning: Collaborate seamlessly with your clients, reviewing orders and making adjustments as needed, even for multiple planning versions.

4. Construction and Installation Drawings: Logikal CAD simplifies the creation of drawings for various elements, such as foils, metal sheets, insulation, and more, making the process quick and hassle-free.

5. Ordering Parts: When it comes to ordering parts, Logikal ensures a swift and efficient process, helping you acquire what you need promptly.

6. Preparing Production: When you're ready to start production, Logikal simplifies the process with a single click, streamlining your operations and reducing preparation time.

With Orgadata's Logikal Software, your organization gains full control over projects, increases efficiency, and ultimately secures a competitive advantage in the industry. Experience the difference Logikal can make in your workflow, from initial project planning to successful production.

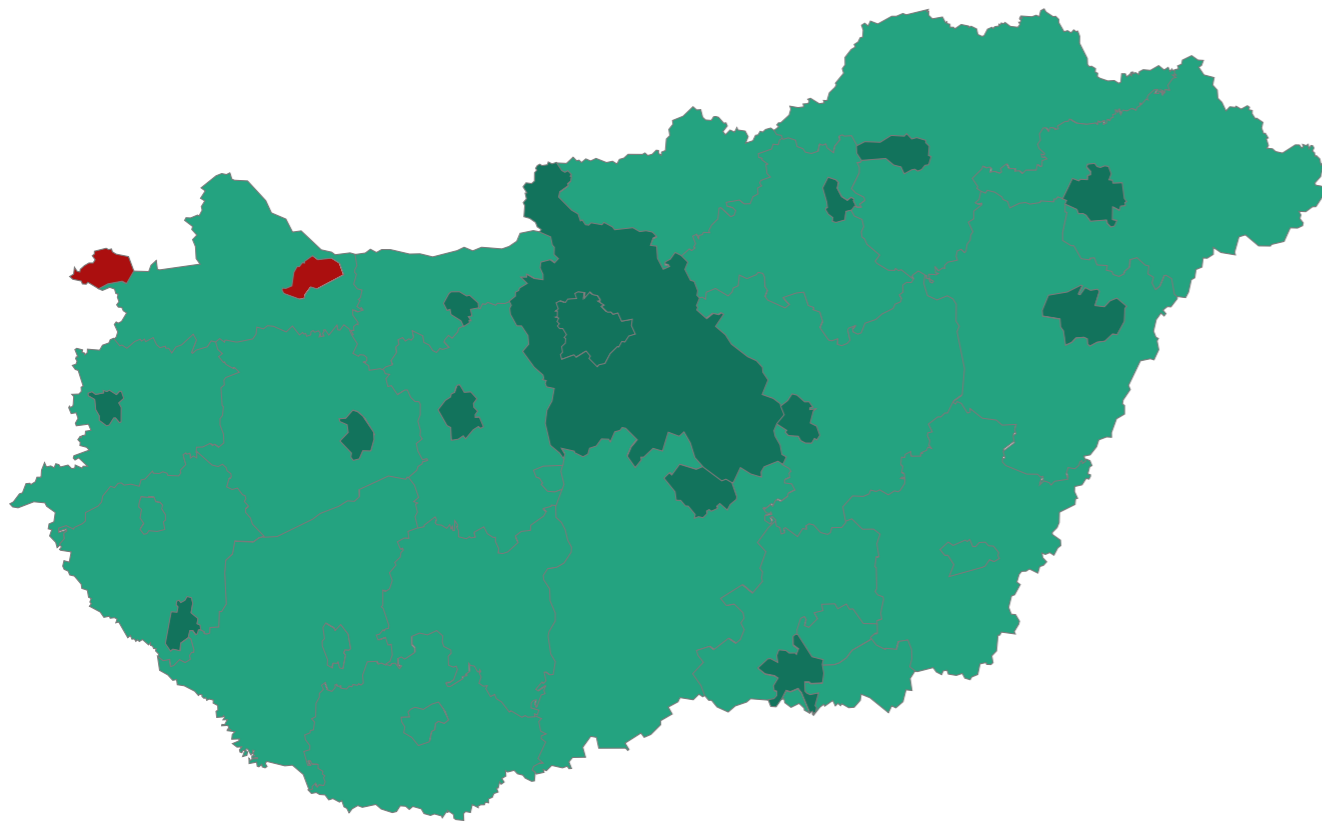
Engineered in Europe, Delivered Worldwide

info@xs-alu.com
+36 20 409 9893
Lackner Kristóf utca 27.
9400 Sopron, Hungary
www.xs-alu.com

XS-ALU Building Systems forges global partnerships to deliver our specialty:

European-engineered excellence in high-performance doors and innovative glazing solutions. From our strategic base in Hungary, we export our unique building solutions to a network of clients across continents, proudly serving markets in European and overseas markets.

Every XS-ALU system is born from our own in-house development process, meticulously engineered to meet the specific needs of our customers. We place a strong emphasis on creating products that are fully compatible with renowned German hardware, ensuring unparalleled durability, safety, and aesthetic appeal.



Our designs are unique, distinguished by a clean Scandinavian architectural vision, deep technical expertise, and our commitment to using first-class recycled materials. Our operational heart is in Hungary's dynamic Western Transdanubian region. With our office in Sopron and our warehouse and production hall in Győr, we are strategically positioned near major transport infrastructures for efficient global logistics. This localized ecosystem, supported by nearby partners and suppliers, is a cornerstone of our strategy

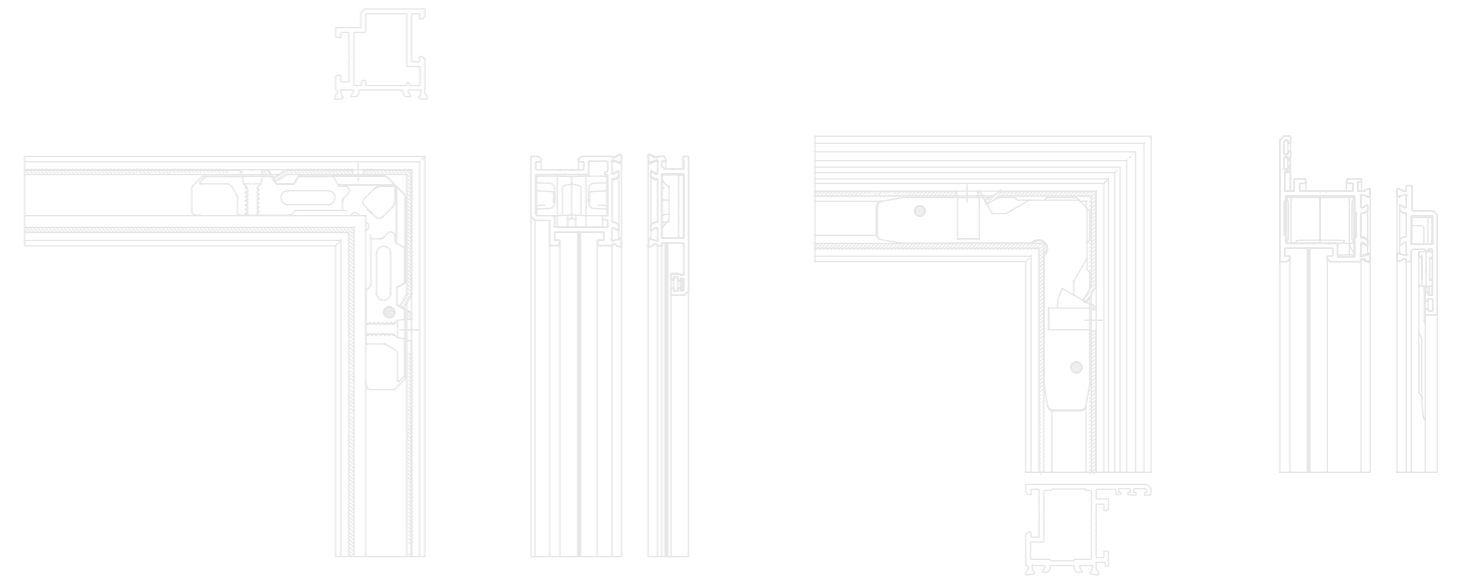
to reduce CO2 emissions and minimize our environmental footprint, aligning our operations with a vision of sustainable manufacturing.

Interested in becoming a local sales representative?

Contact XS-ALU Building Systems to learn more about our partnership opportunities. We are happy to be at your service!

Each highlighted country represents a location with multiple successfully completed projects.





We share a specific goal with our partner companies: to create and produce the best aluminum doors and windows for our customers. Maintenance-free windows shall save energy, add a touch of design, and let more light into our homes, working spaces or our children's schools.

We focus on new fenestration and fire-rated products, where sustainability and a narrow design are key factors. Embrace sustainability and sleek design as a local distributor and producer for our cutting-edge products. Let's collaborate to create a lasting impact.

Your details belong on this page — let's build success together!

